



REPORT
2023

LEITNER®



Pioneering the Way for 135 Years

LEITNER®

2023 wasn't just LEITNER's 135th anniversary. It was one of its most successful years since it was founded in 1888. The company completed 45 ropeway projects in 15 countries.

Through these pioneering projects and by meeting and exceeding customers' wishes and producing a world-first in the transport of mountain carts, LEITNER really did put its core competencies on display more than ever before.

Nowadays, LEITNER sees itself not only as a manufacturer of ropeway systems, but as a dependable partner to its clients, with whom it works to find the best solutions to their challenges. And there is a strong focus on sustainability and protecting resources. Existing buildings, for instance, are often converted; new stations, garages, and ropeway technology are integrated into them. The philosophy is, "Think further than just selling ropeways." And this produces tailored solutions with which LEITNER can win over customers in the market.



Andalo / IT



Kitzbühel / AT

Retrospective

ITALY

By installing a total of twelve new ropeway systems in Italy, LEITNER has created some unique transport experiences and contributed significantly to the modernization of local ski resorts.

Loading and unloading mountain carts fully automatically at the new GD10 "Plose" in St. Andrä / Brixen represents a world first. Another highlight is the new "Doss del Sabion" 10-passenger gondola lift in Campiglio Dolomiti di Brenta, with its underground stations and glass-floored VIP cabin. LEITNER also built a modern 10-passenger gondola lift and a new 6-seater chairlift in the Colere Ski Area in the province of Bergamo, as well as the GD10 "Baby Express" gondola lift in Andalo, which is just 414 meters long. In the winter sports areas

of Pontedilegno-Tonale, Le Melette – Gallio, Civetta, Monte Magnola – Ovindoli, and Folgaria, the very latest, comfortable LEITNER chairlifts upgraded the winter sports experience for the 2023/24 winter season.

AUSTRIA, GERMANY, SWITZERLAND

LEITNER constructed a total of five ropeways in Austria in 2023, providing a new standard of transport at popular destinations. In the Schlick 2000 ski center in Tyrol, the new "Galtbergbahn" 10-passenger gondola lift replaces an old surface lift that has been running for over sixty years. Zeller Bergbahnen has also invested in a modern, direct connection between Zell and Gerlos with its new "Wilde Krimml" 10-passenger gondola lift.

At the renowned ski resort of Kitzbühel, facilities have been upgraded by the installation of two new, ultra-modern chairlifts featuring the latest technologies for minimizing energy use and maximizing operating efficiency. In Kaprun, LEITNER completed its intensive program of building in Austria by constructing a surface lift. In the Bavarian tourist region of Fichtelgebirge, the new "Ochsenkopf Nord" 10-passenger gondola lift replaces an aging chairlift, thereby doubling capacity and significantly reducing waiting times for visitors in summer and winter.

In Switzerland, the new "Matterhorn Glacier Ride II" tricable gondola lift has closed the final gap between Zermatt and Breuil-Cervinia, completing a unique, once-in-a-generation project and forming the highest border crossing in the Alps.

FRANCE

In France, three new LEITNER ropeways now deliver the latest in quality transport in the Haute-Savoie, Auvergne-Rhône-Alpes, and Pyrenees.

In Font-Romeu, the new "Airelles" 10-passenger gondola lift carries twice as many people per hour as its predecessor. At the Les Portes du Soleil ski resort on the border between France and Switzerland, LEITNER built a new 6-seater chairlift with a total capacity of 3,000 passengers per hour. The new "Bérangère" 6-seater chairlift provides greater comfort and operating efficiency at one of the main transport axes in the Chamrousse resort.



Kotor / MNE



Ecatepec / MX

SWEDEN, NORWAY, FINLAND

No fewer than six ski resorts installed LEITNER’s modern ropeway technologies in Sweden, Norway, and Finland in 2023. At the ski resort of Ruka, LEITNER built Finland’s first ever 8-seater chairlift in record time. It has an impressive capacity of up to 4,000 passengers per hour. At the Norwegian ski centers of Hafjell and Hemsedal, operators once again turned to LEITNER to construct two modern 6-seater chairlifts and a surface lift. A new 6-seater chairlift—the CD6 “Västexpressen”—was also on the investment plan in Järvsö in neighboring Sweden.

GREECE AND MONTENEGRO

In Greece, the Kalavrita ski region, which is in the west of the peninsula, has invested in a modern 10-passenger gondola lift built by LEITNER. The little ski resort of Lailias – Serres in the Greek region of Macedonia has added a surface lift to its facilities. In Montenegro, the new “Dub Kuk” 10-passenger gondola lift provides a direct link from the sea to the mountains, delivering ecofriendly mobility amid a stunning landscape.

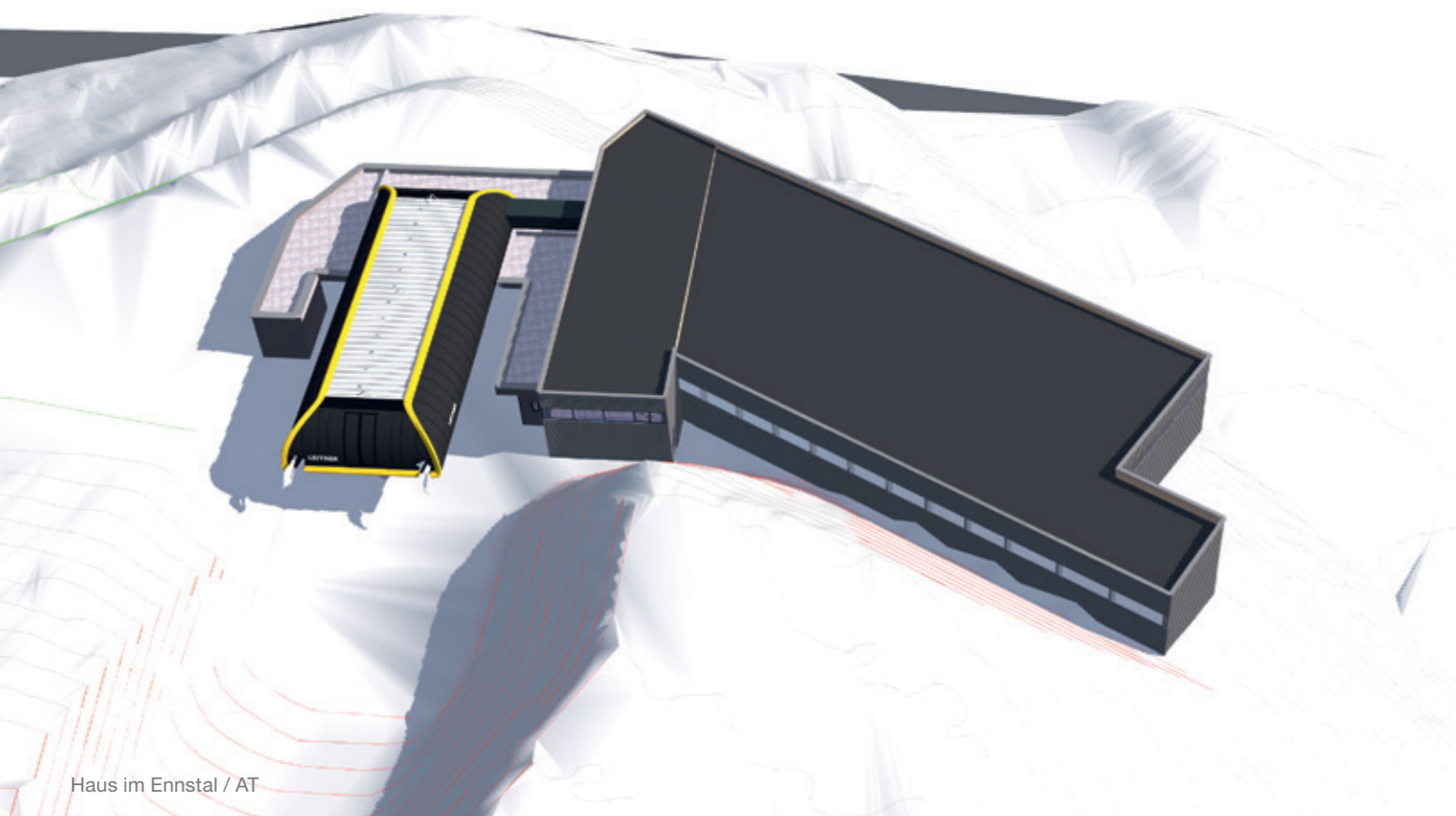
EASTERN EUROPE AND TURKEY

By building nine new ropeways, LEITNER has positioned itself as a strong partner in the development of winter sports in eastern Europe. In Slovenia, the ski resorts of Velika Planina, Krvavec, Kope, and Mariborsko Pohorje have received a major quality boost through LEITNER’s modern, comfortable chairlifts. At the Polish ski resort of Szczyrk, a surface lift has been built which will be followed by a 6-seater chairlift in 2024. LEITNER celebrated its ropeway premiere in the well-known ski region of Pamporovo by installing the comfortable “Malina” 6-seater chairlift. By building a new 8-passenger gondola lift, LEITNER has enabled an ecofriendly transport option up one of the hills near Istanbul that people ascend for its spectacular views. In the

bay of Bodrum, a new funicular built by LEITNER connects a modern hotel and residential complex over multiple levels.

MEXICO

The third 10-passenger gondola lift realized in Mexico, “Mexicable 2 – Linea Verde A-B-C”, perfectly augments the city’s urban transport network due to its intelligent routing. This system, which consists of three interconnected ropeways, carries around 35,000 people daily from the Municipios Ecatepec de Morelos and Tlalnepantla de Baz to Mexico City, quietly crossing the nature reserves of Zacatenco in the Gustavo A. Madero district as it goes.



Haus im Ennstal / AT



St. Moritz / CH

Outlook

SUCCESSFUL MODERNIZATION

Upgrading and modernizing existing ropeways saves money and is a growing factor in making ropeway operation more sustainable. Once again in 2023, many ski resorts decided to upgrade their existing infrastructure by improving comfort, technology, and efficiency. Many of them focused on converting to the gearless LEITNER DirectDrive and LeitControl, making it easier for users to control and monitor their ropeways. Operators took advantage of overhaul work to upgrade comfort and safety and to give their systems a visual makeover, such as by switching to the latest generation of LEITNER cabins and chairs/chairs.

The coming year is full of premieres, a pleasing increase in urban transport solutions, and a steadily growing demand for innovative ways of achieving more sustainability. The future therefore promises lots of exciting projects and challenges.

AUSTRIA

Big changes are afoot in the Hauser Kaibling ski resort. Once completed in winter 2024, the "Kaiblinggrat" 8-seater chairlift, with its heated chairs and premium upholstery, will carry up to 3,800 passengers per hour, powered by LEITNER's resource-saving DirectDrive. One of its special technical features is that it can be turned into a gondola lift for operation in summer. The "Senderbahn" 10-passenger gondola

lift will be built the year after that. Both ropeways represent a first for LEITNER in this popular ski resort, and will make the region even more attractive than it already is.

GERMANY

Following the successful completion of work on the Nordbahn, 2024 will see major modernization in the form of a new gondola lift on the south side of Ochsenkopf in Bavaria's Fichtelgebirge. This ambitious program of construction involves the complete replacement of two chairlifts and will double capacity. The GD10 "Ochsenkopf Süd", like the Nordbahn before it, is designed to be as barrier-free as possible. This includes special solutions for monoskiers, allowing them to make their way easily into the

cabins. Another focus has been on carrying bicycles, which can now be transported easily and safely outside the cabin using LEITNER bike holders. This is the ideal way of carrying bicycles to the bike park, which is also due to be extended and modernized.

SWITZERLAND

In Arosa Lenzerheide, one of the biggest ski resorts in the Swiss canton of Graubünden, LEITNER is replacing a 4-seater chairlift with a model of the latest generation. This is a retrofit project that aligns with sustainability principles. The CD4C "Stätzertäl" will run along the existing route; most of the towers will be used and preserved. Furthermore, PV panels for generating sustainable energy will be installed on the



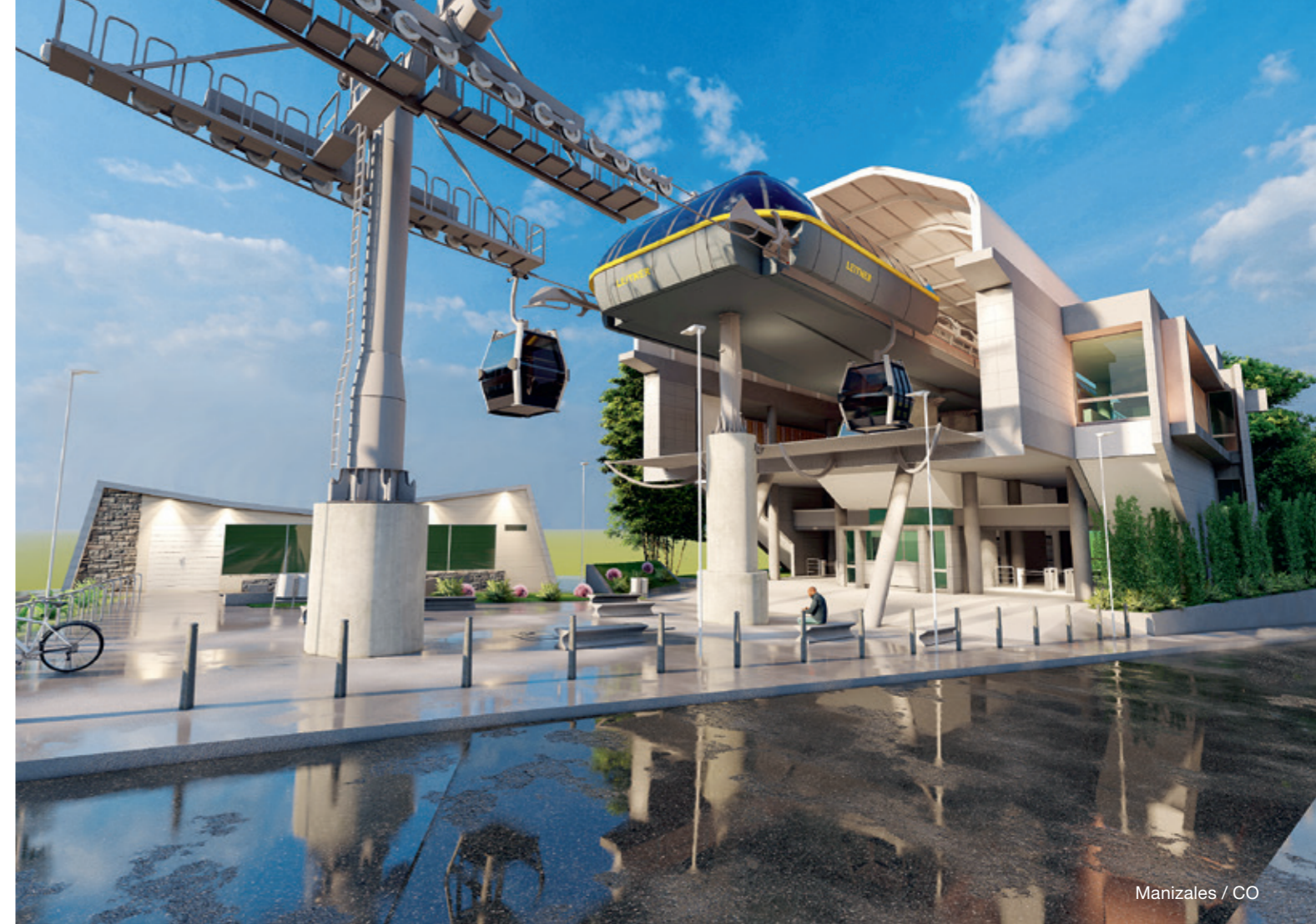
Castelrotto / IT

canopy of the top station, which features LEITNER DirectDrive and EcoDrive. Operators at St. Moritz also made a sustainable choice and appointed LEITNER to give the popular Fis 6-seater chairlift a facelift. This ropeway was fitted with Switzerland's first ever LEITNER DirectDrive over twenty years ago, and now it's being equipped with a model of the latest generation. This retrofitting project also includes upgrading the seats so that winter sports enthusiasts can enjoy even more comfort and safety.

ITALY

The Melinda Consortium processes 400,000 tons of apples annually, and a new ropeway system will soon make it easier to store this fruit in the mines of Rio Maggiore. AGUDIO, LEITNER's specialist in

material transport, is responsible for building a monicable uni-directional ropeway with detachable cabins, each of which will be able to carry just under a ton of apples. Covering a distance of 1.3 kilometers, the ropeway, which includes fully automatic loading and unloading, will soon be carrying 40,000 tons of apples a year. This system will eliminate 6,000 truck journeys annually, representing 12,000 kilometers of driving, which makes the processing much more sustainable. In Castelrotto, the new "Marinzen" 10-passenger gondola lift will replace an old 3-seater chairlift and connect the center of the town with the eponymous Marinzen mountain pasture at the foot of Bullacia. This new ropeway, which features fully automated station garaging, is fitted with Diamond EVO cabins in the XL Deep version, including panoramic doors and, in one of the cabins, a glass floor.



Manizales / CO

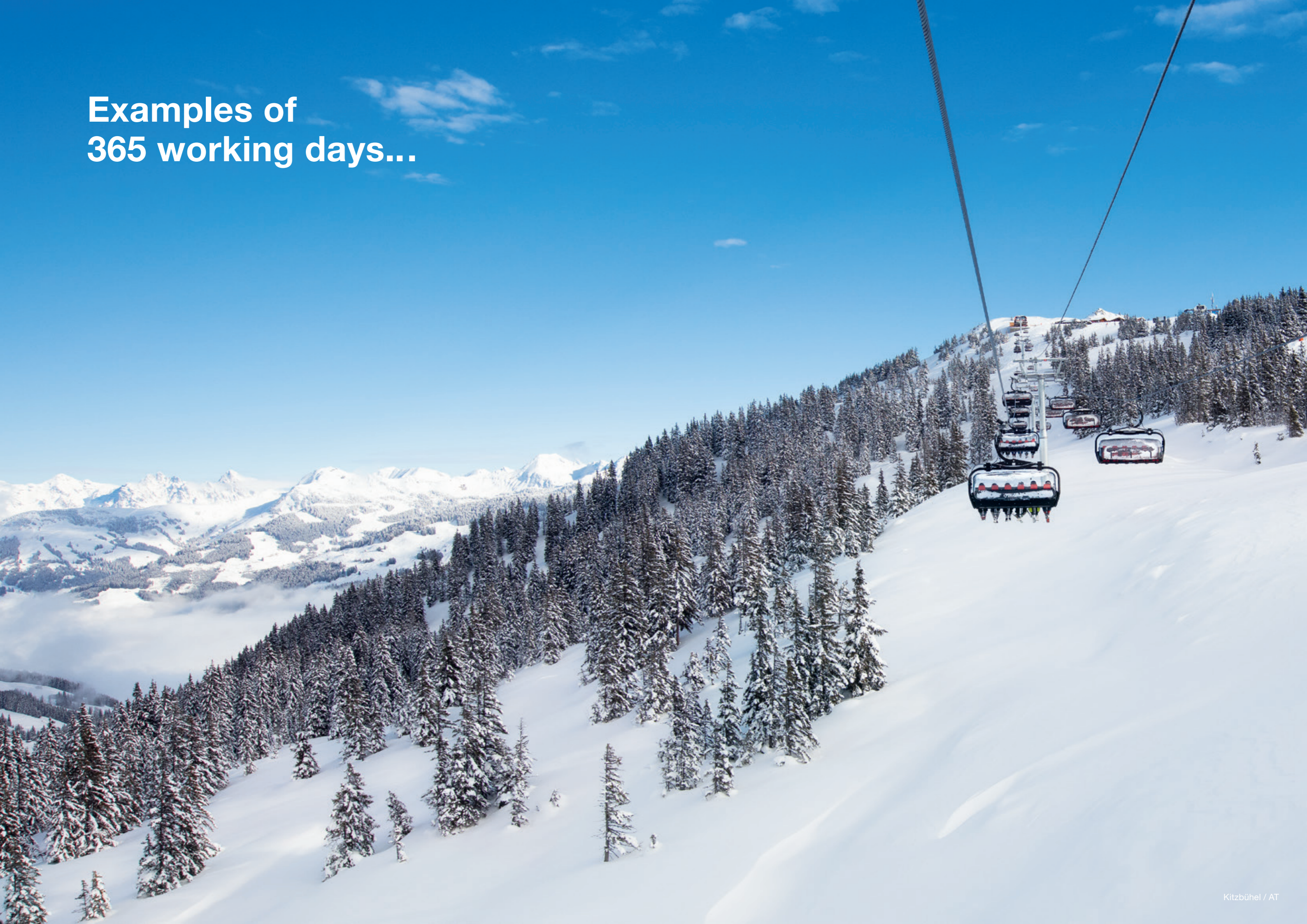
EASTERN EUROPE

The trend towards ropeways continues unabated in eastern Europe as well. In Poland, LEITNER is undertaking no fewer than two new installations: the CD6C "Doliny III" in the Szczyrk Mountain Resort, and an inclined elevator in Wizla featuring a tricable cabin for 40 people. Two new 6-seater chairlifts will upgrade facilities at the well-known ski resorts in the Slovakian town of Mala Frankova and in Kalavrita in Greece. At the Malyovitsa ski resort in Bulgaria, a 4-seater chairlift with bike transport has been built for year-round operation.

COLUMBIA

In Columbia, a new gondola lift will connect people living in the north of the metropolis of Manizales with the financial and business district and the city's transport center. With a length of 2,300 m and a capacity of 2,100 people per hour, the third ropeway to be built by LEITNER in Manizales will soon be augmenting the public transport system. The GD10 "Manizales Linea 3" consists of four stations and has 60 cabins. It will dock onto the two existing ropeways, extending the ropeway network in Manizales to 4,885 meters.

**Examples of
365 working days...**





TD28 MATTERHORN GLACIER RIDE II

Zermatt / CH

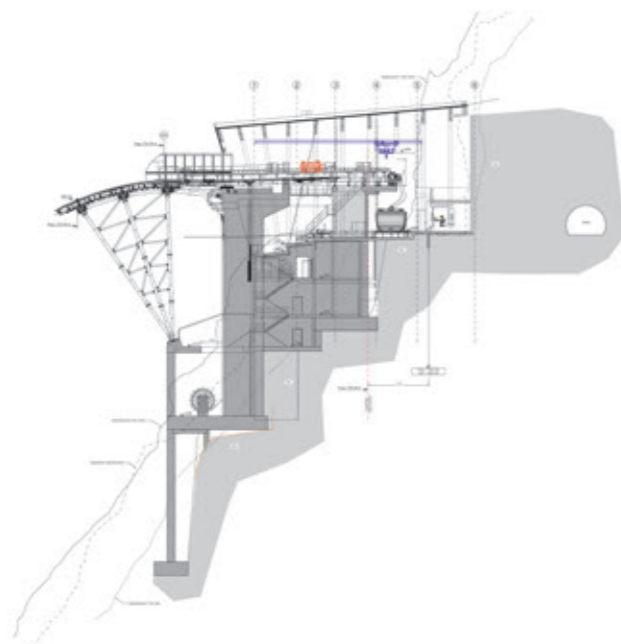
Inclined length	1675 m	Power	485 kW
Vertical rise	362 m	Total number of vehicles	10
Transport capacity	1300 p/h	Total number of towers	0

The Matterhorn Alpine Crossing is a unique, once-in-a-generation project which has created the highest border crossing in the Alps and connects two tourist destinations in Italy and Switzerland throughout the year.

The construction of the new “Matterhorn Glacier Ride II” tricable gondola lift has closed the last remaining gap between Zermatt and Breuil-Cervinia, thus bringing to fruition a long-held vision. As well as its pioneering technical implementation, which includes bridging the distances between the top and bottom

station on the “Matterhorn Glacier Ride II” without towers, much emphasis was placed on sustainability. For example, an additional photovoltaic system was commissioned on the facade of the new top station and will supply around 16,875 kWh of electricity each year.

This project is unique in a number of ways. It involved pioneering work on the construction sites at extreme altitudes, as well as collaboration between two countries on a joint project which connects two tourism areas throughout the year.







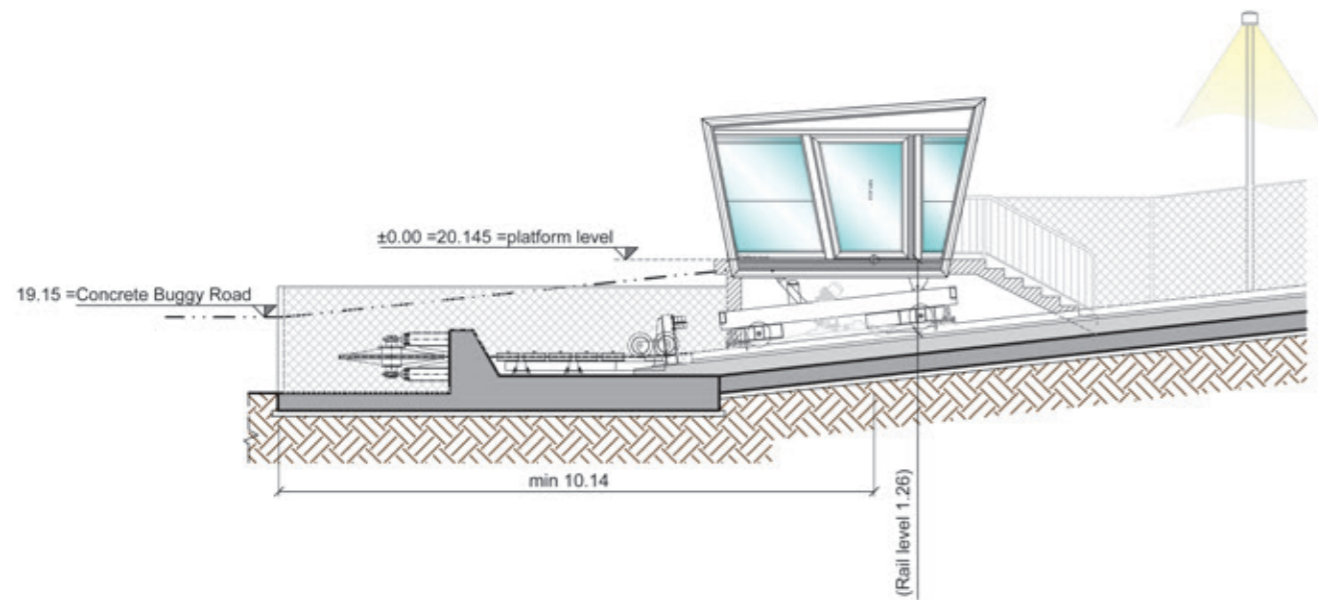
IF33 MILAS

Milas / TR

Inclined length	606 m	Power	200 kW
Vertical rise	155 m	Total number of vehicles	1
Transport capacity	260 p/h	Total number of towers	0

In the Bay of Bodrum, a new LEITNER funicular called IF33 "Milas" delivers comfortable transport between the hotel complex of Six Senses Kaplankaya, and a neighboring villa resort which extends over a number of levels and 155 vertical meters. The cabin, which can carry 33 people, has a fully automated tilt mechanism which ensures that passengers can get in and

out of a horizontal vehicle at every station. The system is designed like an elevator and carries its passengers at a speed of 4 m/s at the press of a button to each of the seven stations, which lie at different altitudes along the plateau. The funicular covers a distance of 605 meters and has a capacity of 253 passengers per hour in each direction.







GD10 MEXICABLE 2 – LINEA VERDE A-B-C

Mexico City / MX

Linea Verde-A

Inclined length	3022 m
Vertical rise	4 m
Transport capacity	3000 p/h

Power	1143 kW
Total number of vehicles	103
Total number of towers	20

Linea Verde-B

Inclined length	2878 m
Vertical rise	74 m
Transport capacity	3000 p/h

Power	1016 kW
Total number of vehicles	100
Total number of towers	18

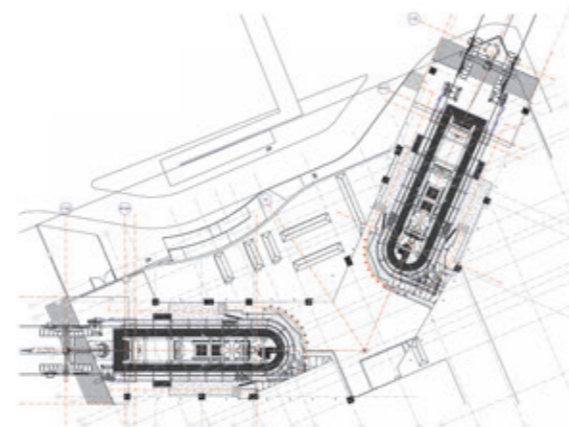
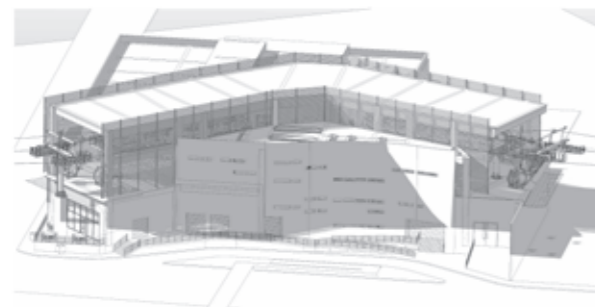
Linea Verde-C

Inclined length	2236 m
Vertical rise	45 m
Transport capacity	3000 p/h

Power	1016 kW
Total number of vehicles	82
Total number of towers	15

Mexico City in Central America is considered a global pioneer when it comes to integrating ropeways into the urban transport networks, providing safe, quick, ecofriendly mobility for its residents. The third ropeway to be built in Mexico, the GD10 “Mexicable 2 – Linea Verde A-B-C”, represents a perfect addition with its ingenious routing. The ropeway begins at the second station of the GD10 “Mexicable 1 – Linea Roja” (which was also built by LEITNER),

and carries passengers in around 300 cabins over a distance of 8.5 kilometers past seven stations to the Indios Verdes subway station. This system, which consists of three inter-connected ropeways, carries around 35,000 people daily from the Municipios Ecatepec de Morelos and Tlalnepantla de Baz to Mexico City, quietly crossing the nature reserves of Zacatenco in the Gustavo A. Madero district as it goes.









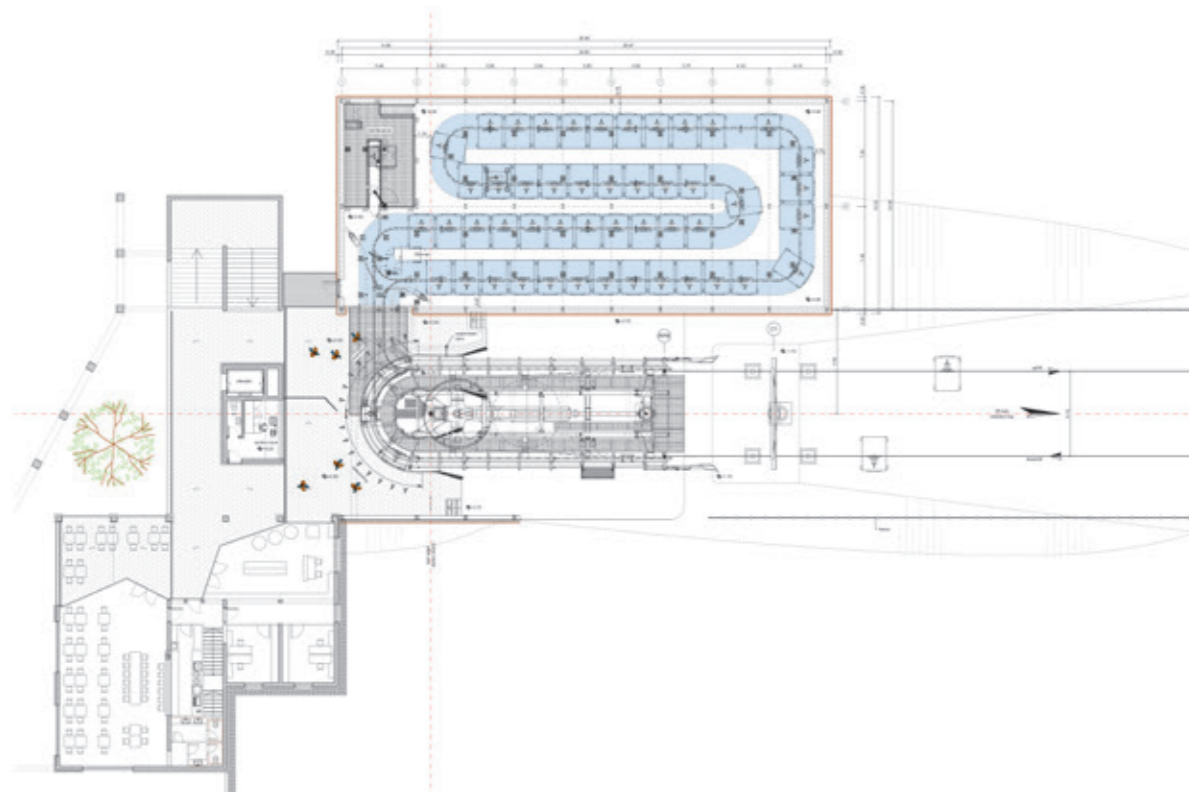
GD10 DUB KUK

Kotor / MNE

Inclined length	3917 m	Power	880 kW
Vertical rise	1316 m	Total number of vehicles	48
Transport capacity	1200 p/h	Total number of towers	19

In Kotor in summer 2023, LEITNER completed an extraordinary technological feat which is unique in the way it is built and the way it works: a 3.9 km long 10-passenger gondola lift, which ascends 1,316 meters from the sea to the mountain, providing sustainable mobility between Kotor and Lovćen National Park. The GD10 Dub Kuk's 40 Diamond EVO cabins are fully glazed, equipped with wooden chairs and night time lighting, and able to transport 1,000 passengers per hour. They sail up to the top in

just eleven minutes, escaping traffic congestion on the busy access road below. Not only is it a much quicker and more comfortable way to get there; it also significantly reduces carbon emissions. This unusual gondola lift provides a sustainable transport solution coupled with a unique experience which showcases the beauty of the region. It's an example of best practice and is designed as an inspiration for other regions that would like to install pioneering mobility solutions like LEITNER's.









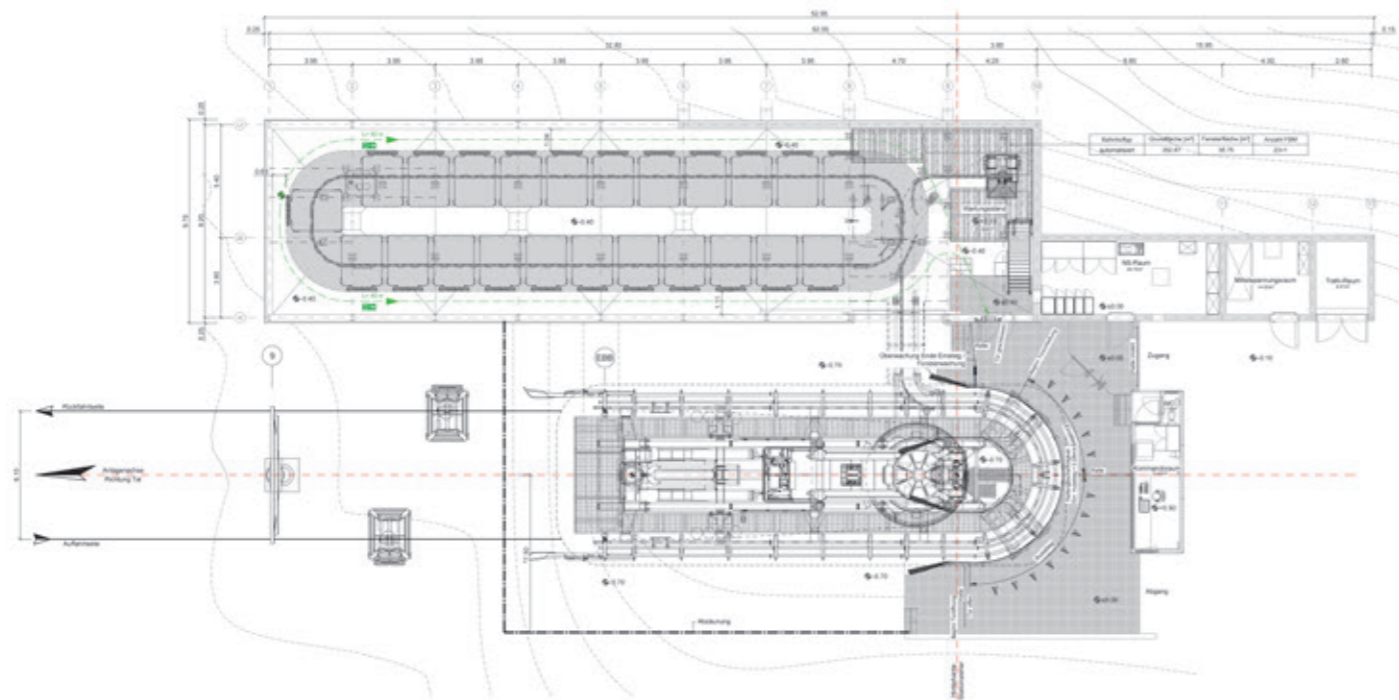
GD10 GALTBERGBAHN

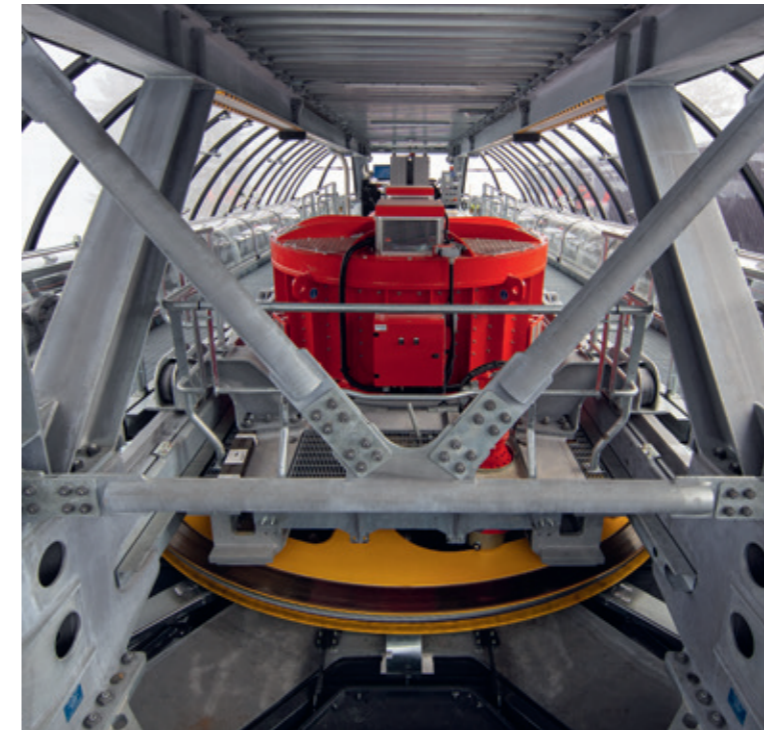
Fulpmes / AT

Inclined length	1436 m	Power	529 kW
Vertical rise	455 m	Total number of vehicles	33
Transport capacity	2000 p/h	Total number of towers	9

At the Schlick 2000 ski center near Innsbruck, the new GD10 "Galtbergbahn" replaces an old surface lift that has been running for over sixty years. The new ropeway serves the route from Fronebenalm to above Galtalm, and boasts an impressive all-round view, thanks to its Diamond EVO cabins with large panoramic windows.

This modern gondola lift, which travels a distance of 1,435 meters at a speed of 6 m/s, features LEITNER DirectDrive, making an important contribution to better sustainability, less maintenance work and significant noise reduction. And, as a perfect addition to that, a LeitDrive frequency inverter (also developed by LEITNER) has been installed.







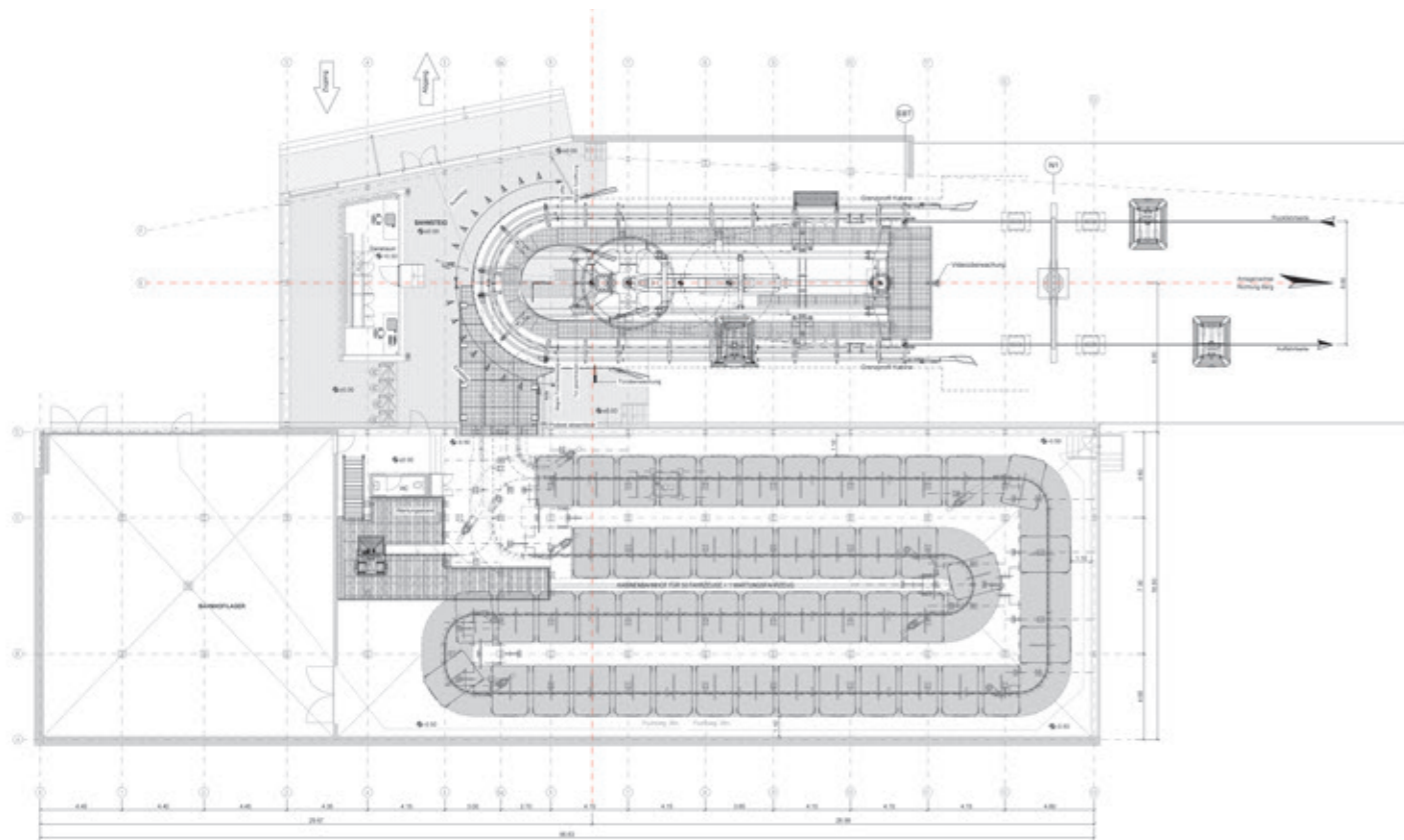
GD10 WILDE KRIMML

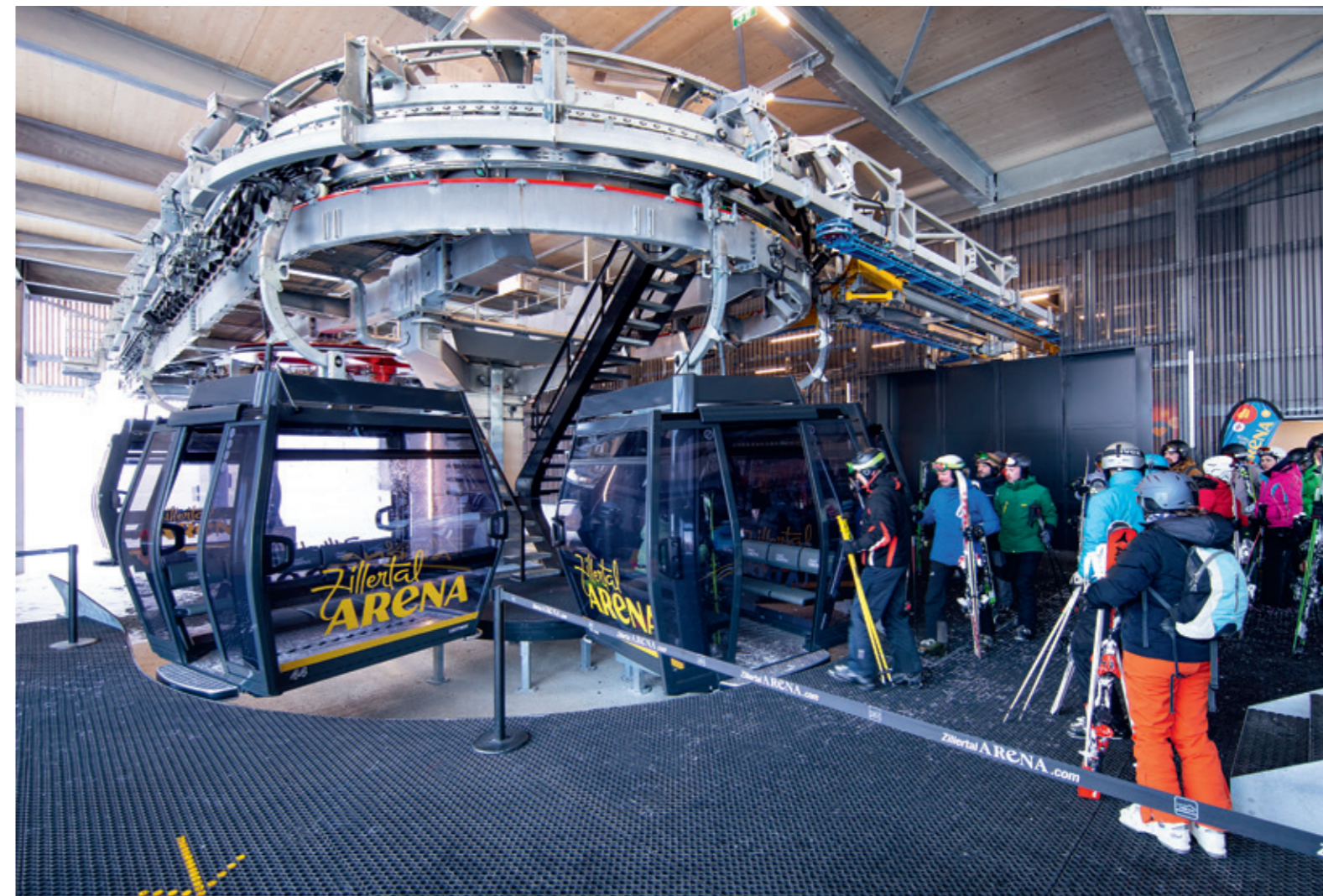
Zell am Ziller / AT

Inclined length	1870 m	Power	794 kW
Vertical rise	436 m	Total number of vehicles	50
Transport capacity	2400 p/h	Total number of towers	9

The operators of the family-friendly Zillertal Arena ski resort have invested in a comfortable modern ropeway made by LEITNER. The "Wilde Krimml" 10-passenger gondola lift provides a direct link between Zell and Gerlos, and does so without the middle station which the previous chairlift needed. Fitted with LEITNER DirectDrive and Diamond EVO cabins, the ropeway offers lots of space and heated chairs, making for a comfortable ride

from Krimmalm up to the Übergangsjoch for up to 2,400 passengers per hour. One of this ropeway's special features is its integrated evacuation function, which raises its availability level to such an extent that a separate rescue line is no longer needed. It incorporates not only the latest ropeway technology, but also a strong architectural dimension developed in collaboration with world-renowned architects Snøhetta.









GD10 PLOSE 1 + 2

Brixen - Bressanone / IT

Plose 1

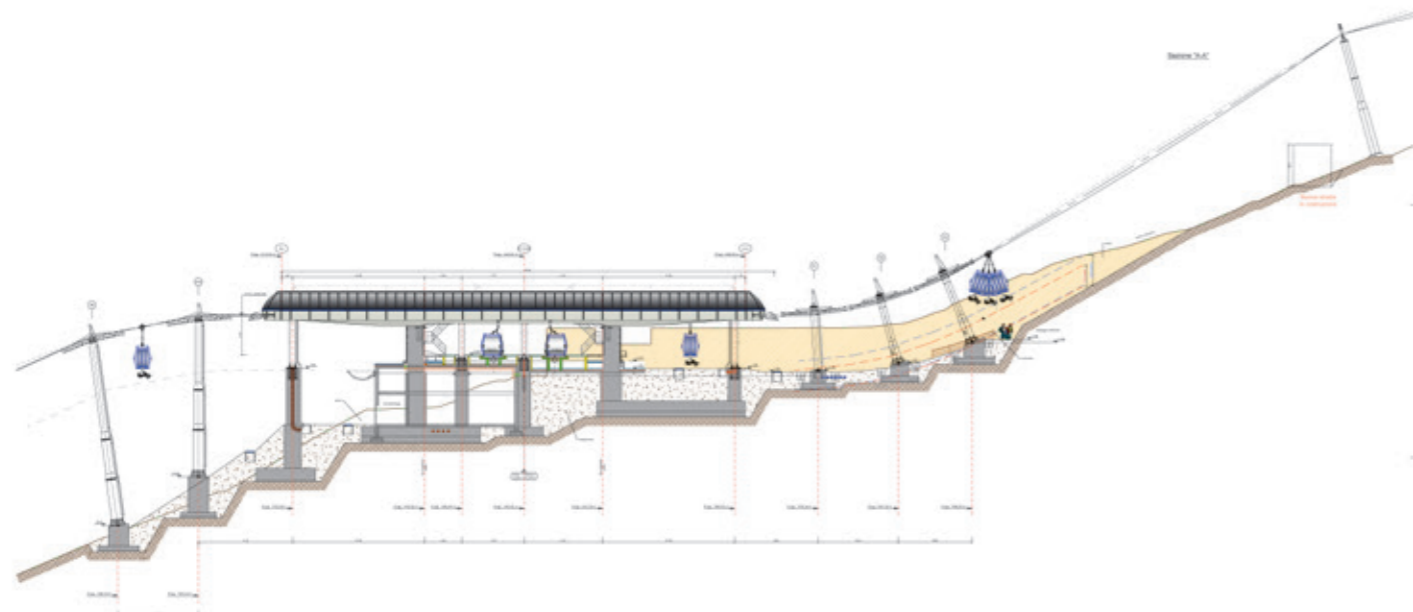
Inclined length	1502	m
Vertical rise	556	m
Transport capacity	2400	p/h
Power	793	kW
Total number of vehicles	43	
Total number of towers	10	

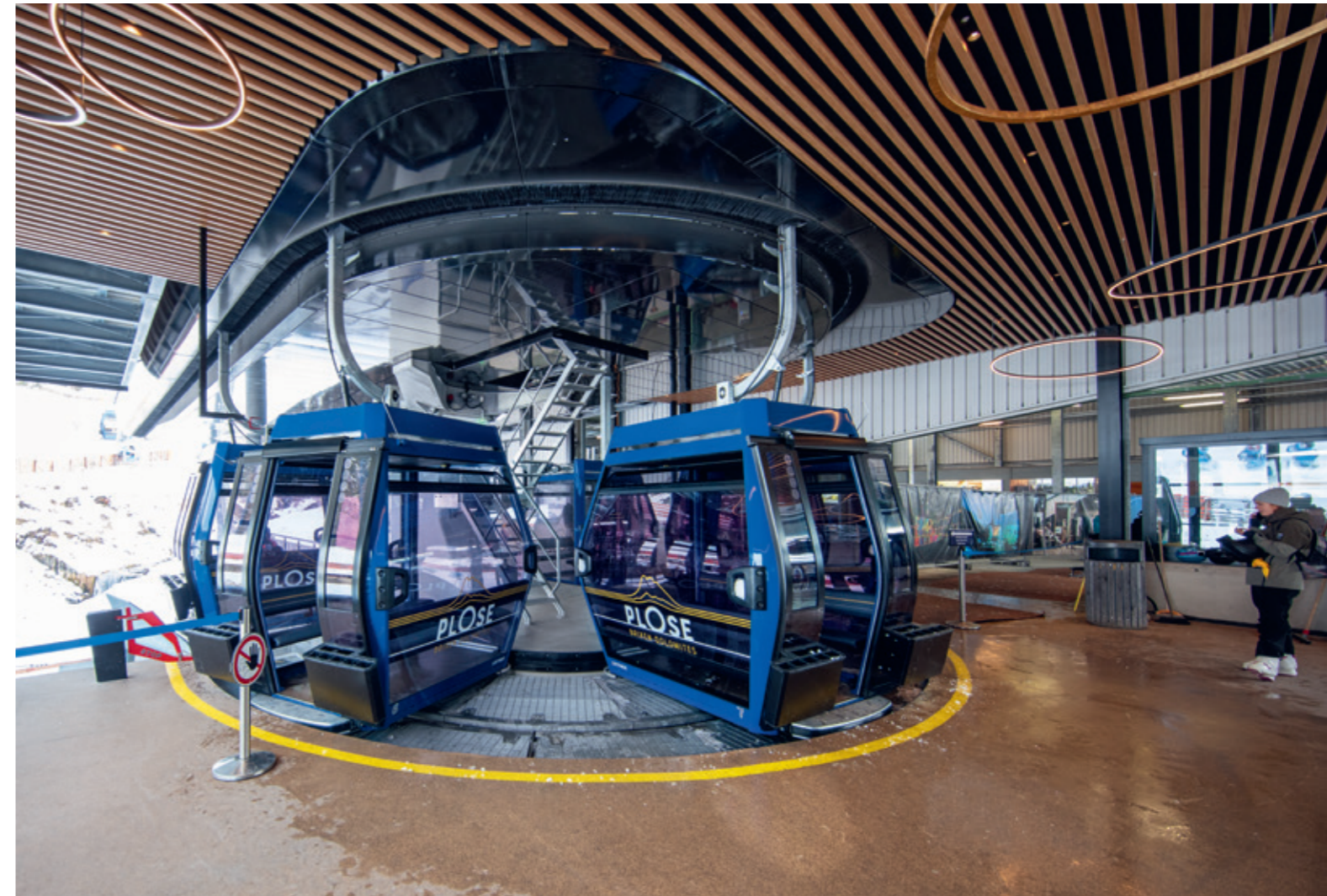
Plose 2

Inclined length	1141	m
Vertical rise	424	m
Transport capacity	2400	p/h
Power	793	kW
Total number of vehicles	35	
Total number of towers	11	

The completion of a 26 million euro project in the Bressanone-Plose region brings modern, ecofriendly, innovative quality transport. The new "Plose" 10-passenger gondola lift, which has been built along the existing ropeway route, consists of two sections. Its 78 Diamond EVO cabins can carry up to 2,400 people per hour. Special attention was given to creating a simple solution for carrying bikes and mountain carts. Unlike before, sports equipment is now carried on the outside and bottom of the cabins instead of inside. A fully automated

mountain cart loading and unloading system at the bottom and top stations is a world first. Some of these processes are entirely underground, so they don't obstruct passengers getting in and out. This sophisticated system for transporting sports equipment also features the new LEITNER bike holders, which allow bikes to be easily attached to either side of every other cabin. The holders can fold away after use, which means they don't affect spacing between the vehicles in the garage.









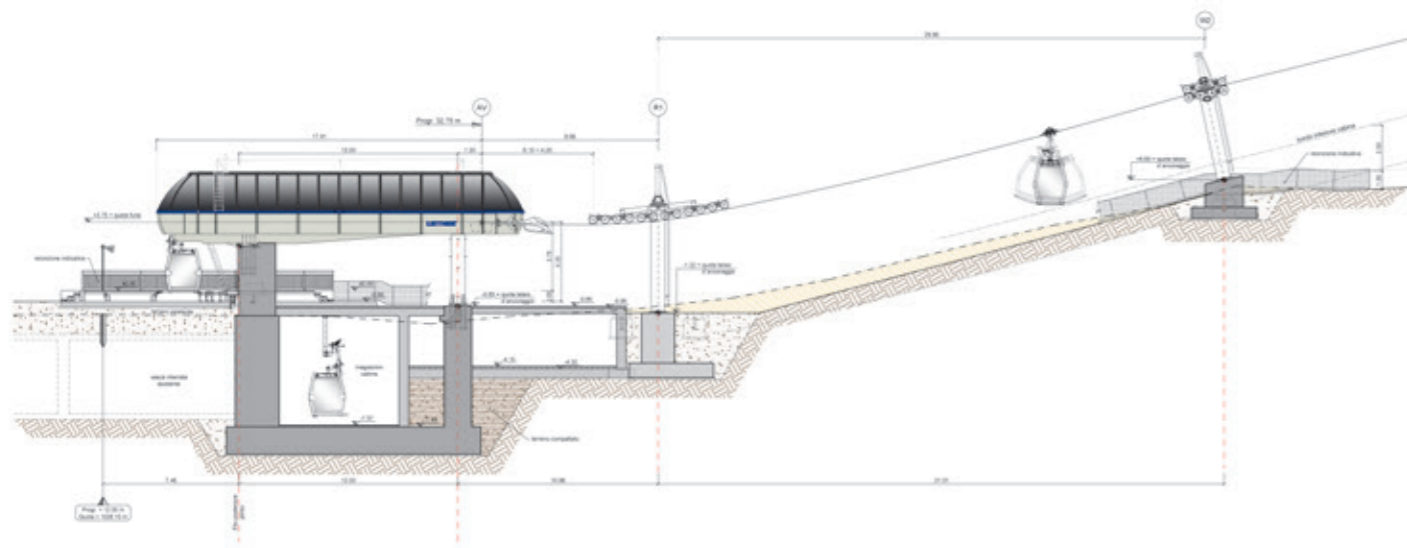
GD10 BABY EXPRESS

Andalo / IT

Inclined length	415 m	Power	250 kW
Vertical rise	113 m	Total number of vehicles	21
Transport capacity	2400 p/h	Total number of towers	5

The "Baby Express" 10-passenger gondola lift at the Andalo ski resort in Trentino runs up a beginner's slope and is designed specially for ski schools to use. This ropeway is just 414 meters long, making it the shortest and most compact gondola lift LEITNER has ever built.

It serves a large area of easy slopes in the popular family resort. This comfortable new ropeway replaces a fixed-grip 2-seater chairlift and carries 1,800 passengers per hour at a speed of 4 m/s.







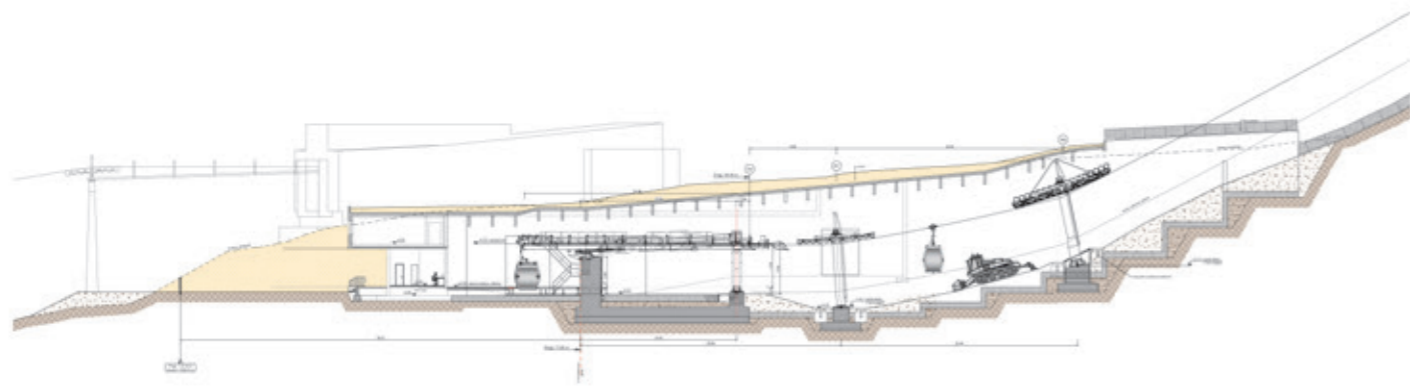
GD10 DOSS DEL SABION

Pinzolo / IT

Inclined length	1633 m	Power	854 kW
Vertical rise	592 m	Total number of vehicles	53
Transport capacity	2800 p/h	Total number of towers	11

At Campiglio Dolomiti di Brenta, one of the biggest ski resorts in Trentino, the "Doss del Sabion" 10-passenger gondola lift has replaced an old chairlift from the 1980s. Running near to the original chairlift's route, the new ropeway, which is fitted with LEITNER DirectDrive and 53 Diamond EVO Premium cabins with panoramic doors and a glass-floored VIP cabin, carries up to 2,800 passengers per hour up to the Doss del Sabion mountain refuge. When they arrive, passengers can enjoy a new 360 degree viewing

platform offering breathtaking views across the entire Rendena Valley, as well as a view towards the glaciers of the Adamello Group and, opposite that, the cliffs and peaks of the Brenta Dolomites, which are a UNESCO World Heritage Site. This ropeway's special features include two underground stations, of which the only thing that can be seen are the entrances and exits and an access tunnel for skiers and hikers that is cut into the slope.







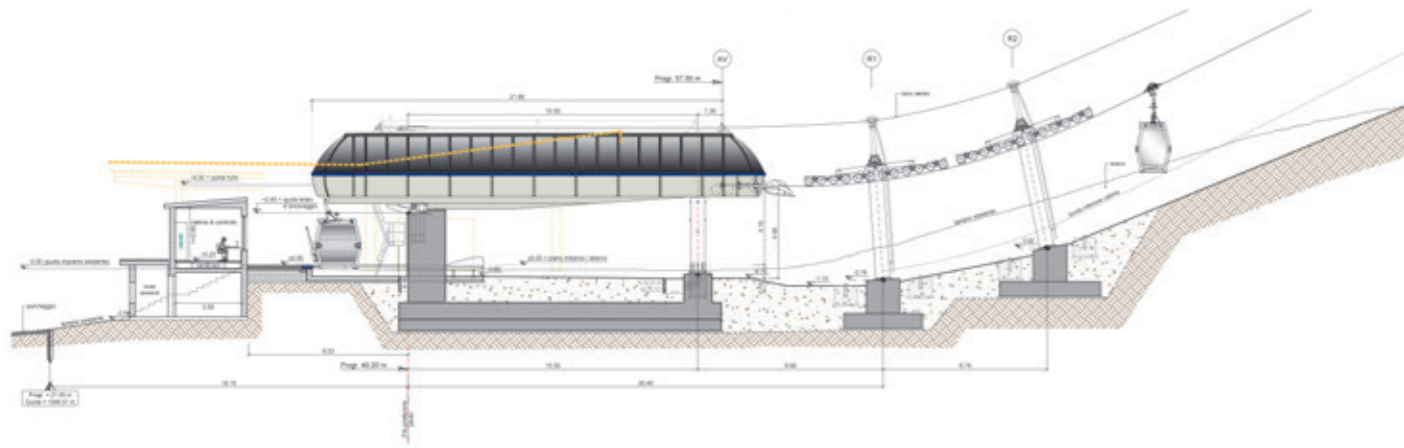
GD10 CARBONERA

Colere / IT

Inclined length	1573 m	Power	630 kW
Vertical rise	501 m	Total number of vehicles	30
Transport capacity	1700 p/h	Total number of towers	8

The ski resort of Colere is investing in completely new systems at the foot of Presolana in the province of Bergamo. As part of this far-reaching revitalization work, LEITNER has been appointed to build the “Carbonera”

10-passenger gondola lift, as well as other projects. This modern ropeway replaces a fixed-grip 2-seater chairlift and, with a capacity of 1,700 passengers per hour, feeds the higher ropeway systems from the valley.





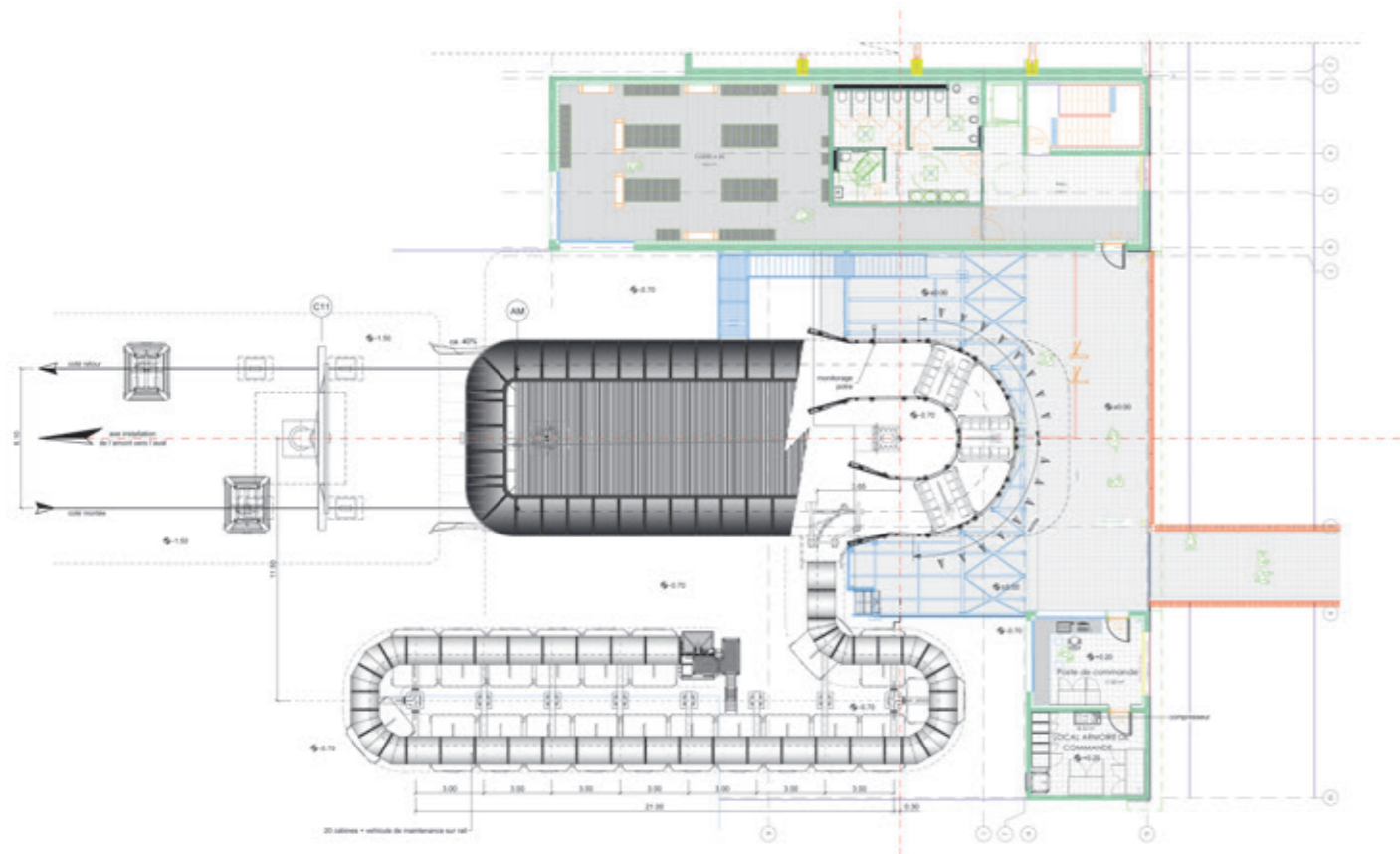
GD10 AIRELLES EXPRESS

Font-Romeu / FR

Inclined length	1747 m	Power	529 kW
Vertical rise	187 m	Total number of vehicles	48
Transport capacity	2400 p/h	Total number of towers	11

The new "Airelles Express" 10-passenger gondola lift has provided a major quality upgrade at Font-Romeu in France. This modern ropeway replaces a 6-passenger gondola lift running along the feeder route to the ski resort's 58 kilometers of slopes. The new ropeway offers much more comfort and, because it almost doubles capacity, eliminates long

queues of people waiting to ascend. Equipped with LEITNER DirectDrive and 40 Diamond Evo cabins with panoramic doors, the ropeway carries up to 2,400 passengers per hour up and down a slope of more than 1,700 meters at a speed of 6 m/s. The bottom station achieves a compact design by incorporating two parking lines in its garage.





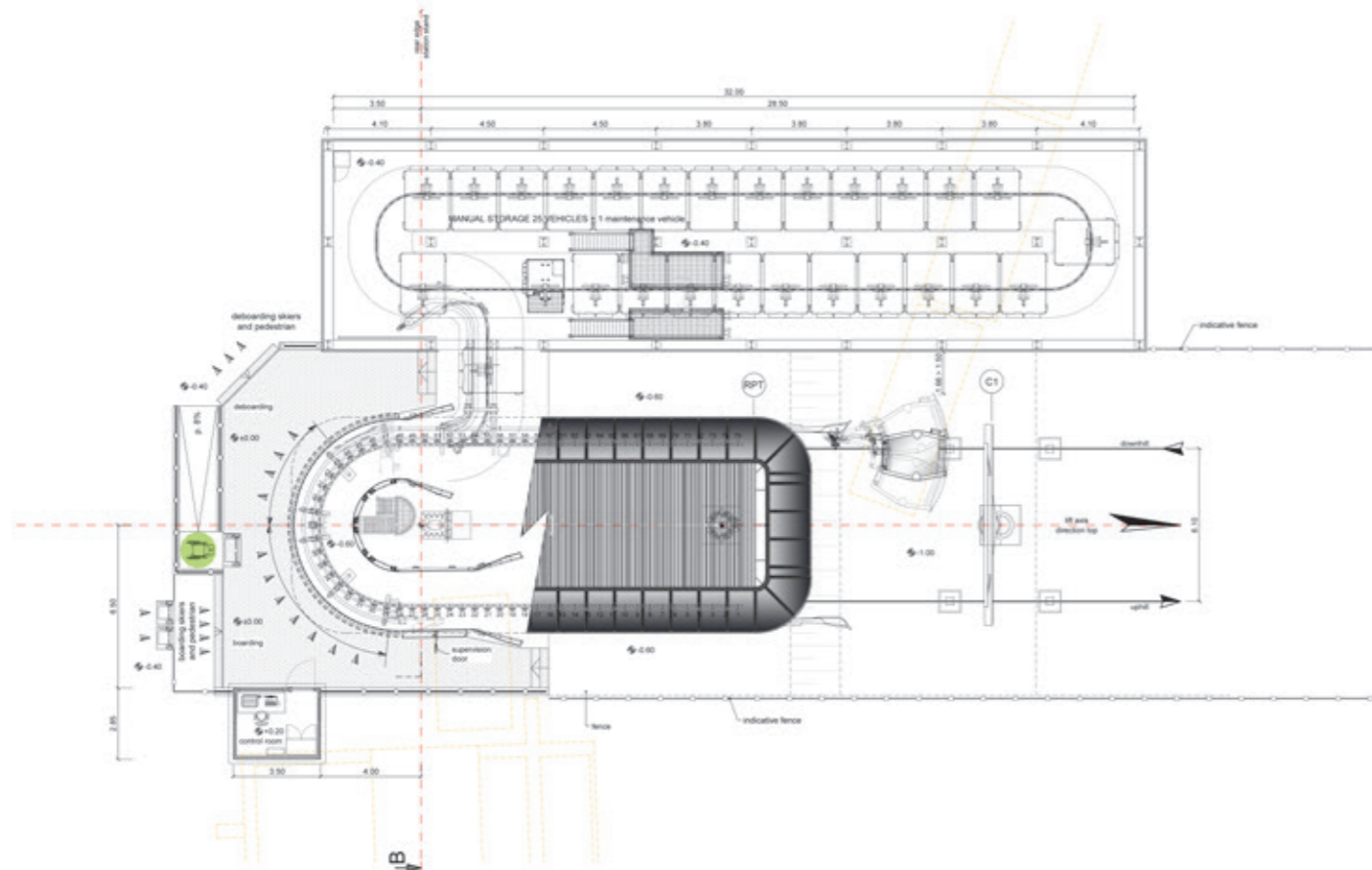
GD10 ACHILLEAS

Kalavryta / GR

Inclined length	729 m	Power	370 kW
Vertical rise	161 m	Total number of vehicles	25
Transport capacity	2200 p/h	Total number of towers	5

In Greece, in the west of the peninsula, they have invested in a modern LEITNER 10-passenger gondola lift. The GD10 "Achilleas" boosts the facilities of the Kalavrita ski resort, which has 25 kilometers of slopes. The new ropeway is powered by a resource-saving

LEITNER DirectDrive and, once fully developed, will carry up to 2,000 passengers per hour at a speed of 5 m/s. The modernization of this ski resort will continue in the coming year with the construction of the 6-seater Styga chairlift.







GD8 SAPANCA

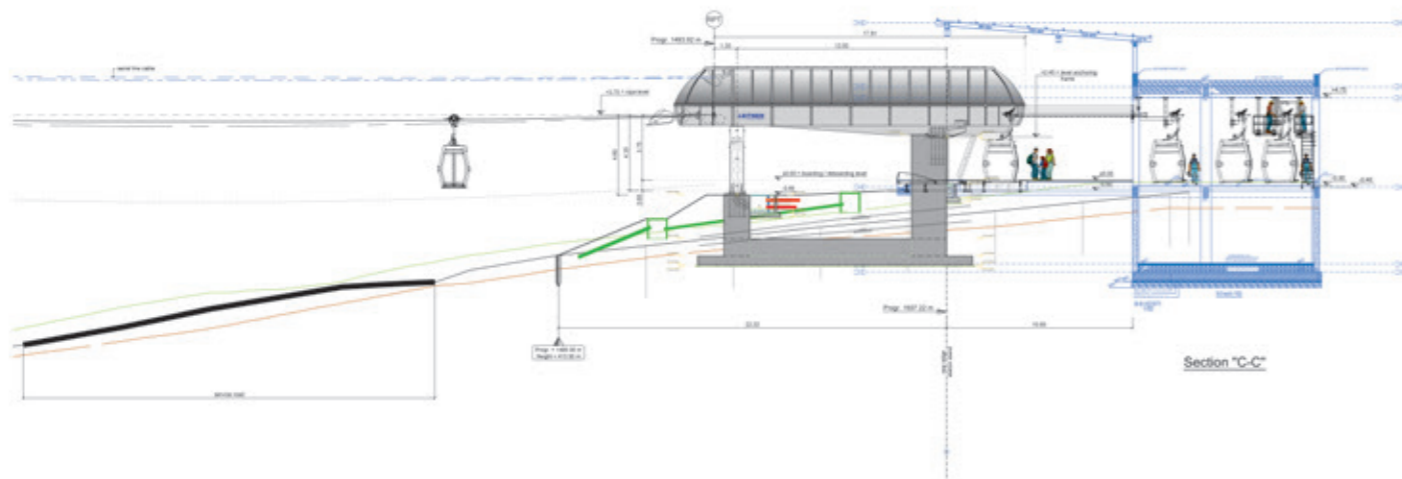
Sapanca / TR

Inclined length	1501 m	Power	355 kW
Vertical rise	319 m	Total number of vehicles	36
Transport capacity	1513 p/h	Total number of towers	9

The new GD8 "Sapanca" gondola lift begins near the main transport route between Istanbul and Ankara about 10 kilometers from the local rail station, and carries visitors from there up on to the local viewpoint, 320 meters above. This 8-passenger gondola lift is the first in Turkey to be equipped with LEITNER's new Diamond EVO Premium cabins.

A total of 36 cabins travel at a speed of 5 m/s,

providing safe, comfortable transport between mountain and valley over a distance of around 1.5 kilometers. The bottom and top stations are each integrated into the existing buildings, which minimizes the encroachment of building work into the natural surroundings and means that all of the important facilities are very close to the entrance and exit.





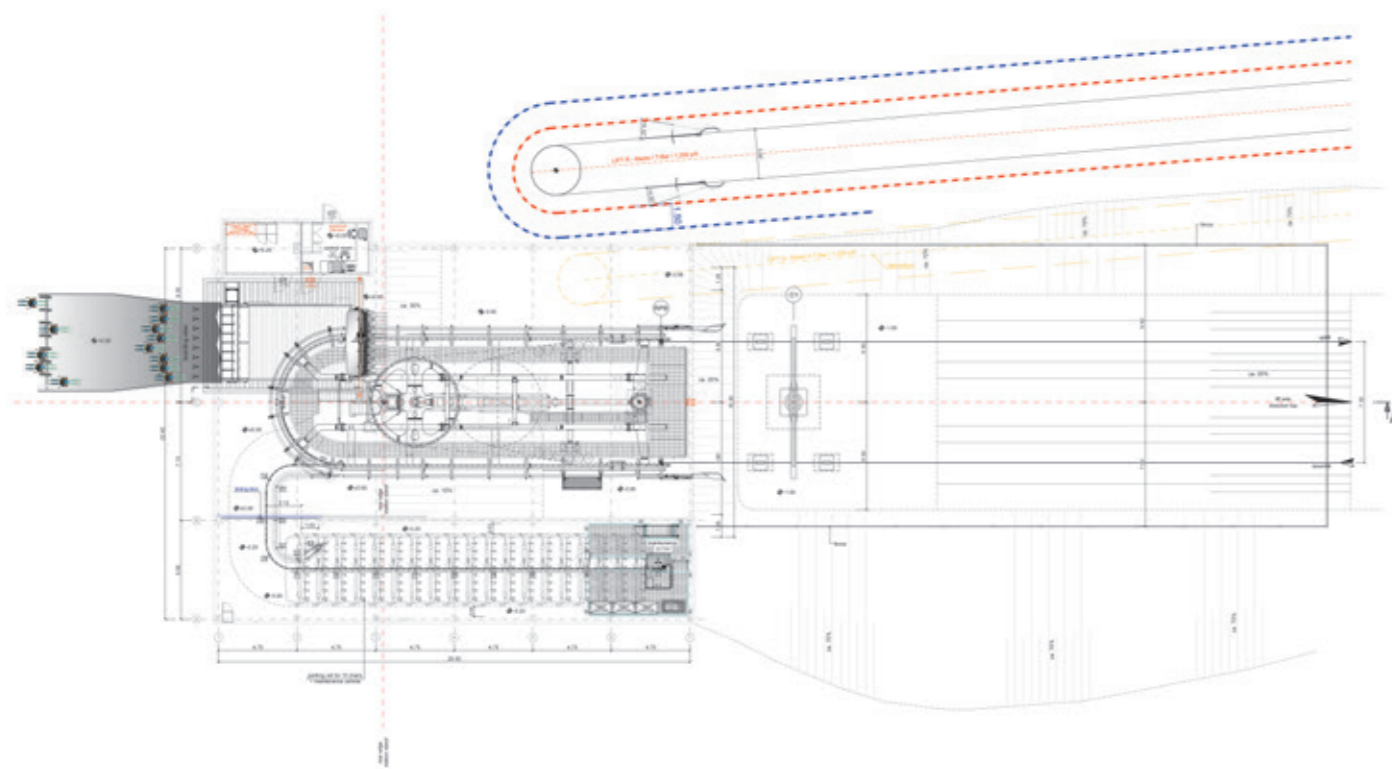
CD8C MASTO EXPRESS

Ruka-Kuusamo / FI

Inclined length	640 m	Power	407 kW
Vertical rise	122 m	Total number of vehicles	37
Transport capacity	4000 p/h	Total number of towers	6

Finland's first ever 8-seater chairlift has an impressive capacity of up to 4,000 people per hour and is being built by LEITNER at the Ruka resort. This resort, which is known especially for Nordic skiing also offers the country's longest skiing season and, despite not varying greatly in altitude, boasts a surprisingly diverse range of possibilities for skiers, snowboarders, and freestylers. The beginning of the season will see the launch of the new "Masto Express"

8-seater chairlift, which is designed for year-round operation and includes bicycle transport. This technically sophisticated ropeway features vibration dampers and EVO Premium chairs. It was built in a record five months. To keep the design as compact as possible, LEITNER deployed a combined system involving two integrated parking lines in the bottom station garage.







CD6C TRATTENBACH

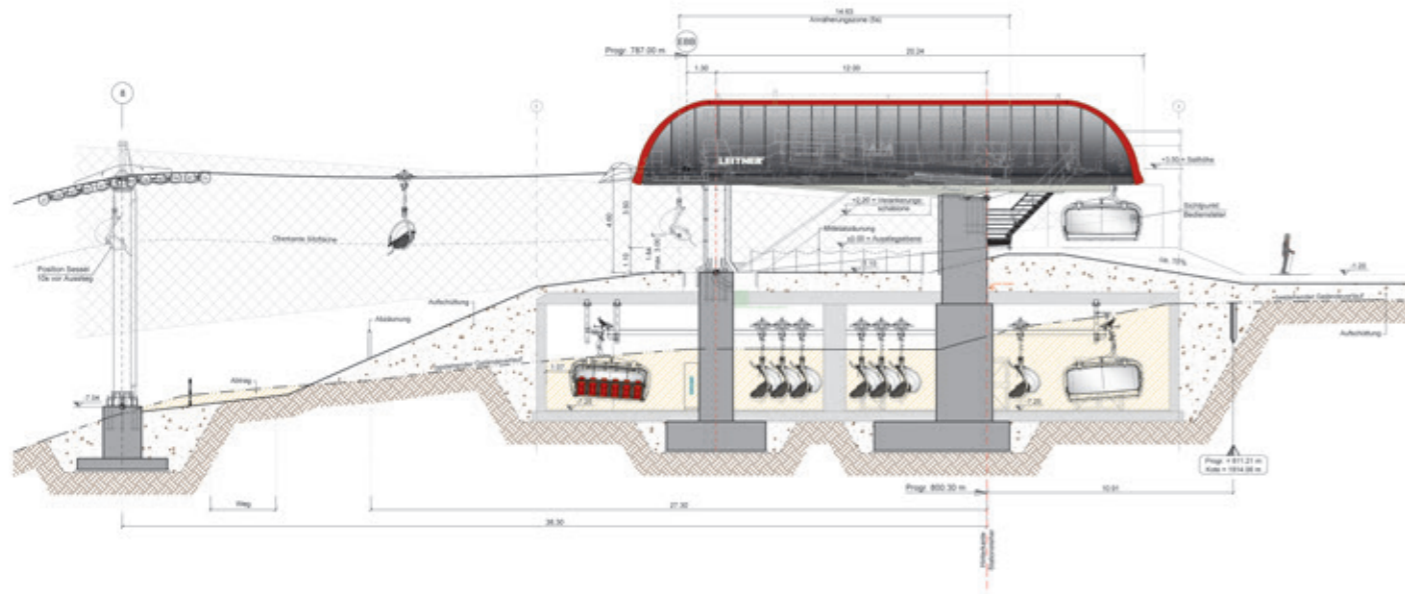
Kitzbühel / AT

Inclined length	802 m	Power	441 kW
Vertical rise	308 m	Total number of vehicles	41
Transport capacity	2400 p/h	Total number of towers	8

The new CD6C "Trattenbach" 6-seater chairlift in Kitzbühel delivers sustainability and the very latest technology. This modern ropeway, equipped with the latest LEITNER technology, replaces an aging 3-seater chairlift. The route is slightly different from that of the old line, but it needs just eight towers instead of thirteen. As well as LEITNER DirectDrive, it incorporates LEITNER EcoDrive, an automated, adaptive speed control system that saves up to 20% in

energy, as well as an Intelligent Heat Detector (IHD).

The station canopy's features include a photovoltaic system, in which the LEITNER Premium Station's polycarbonate panes are replaced with curved panels incorporating PV elements. Designed by Pininfarina, this station is optimized to generate energy throughout the whole winter.







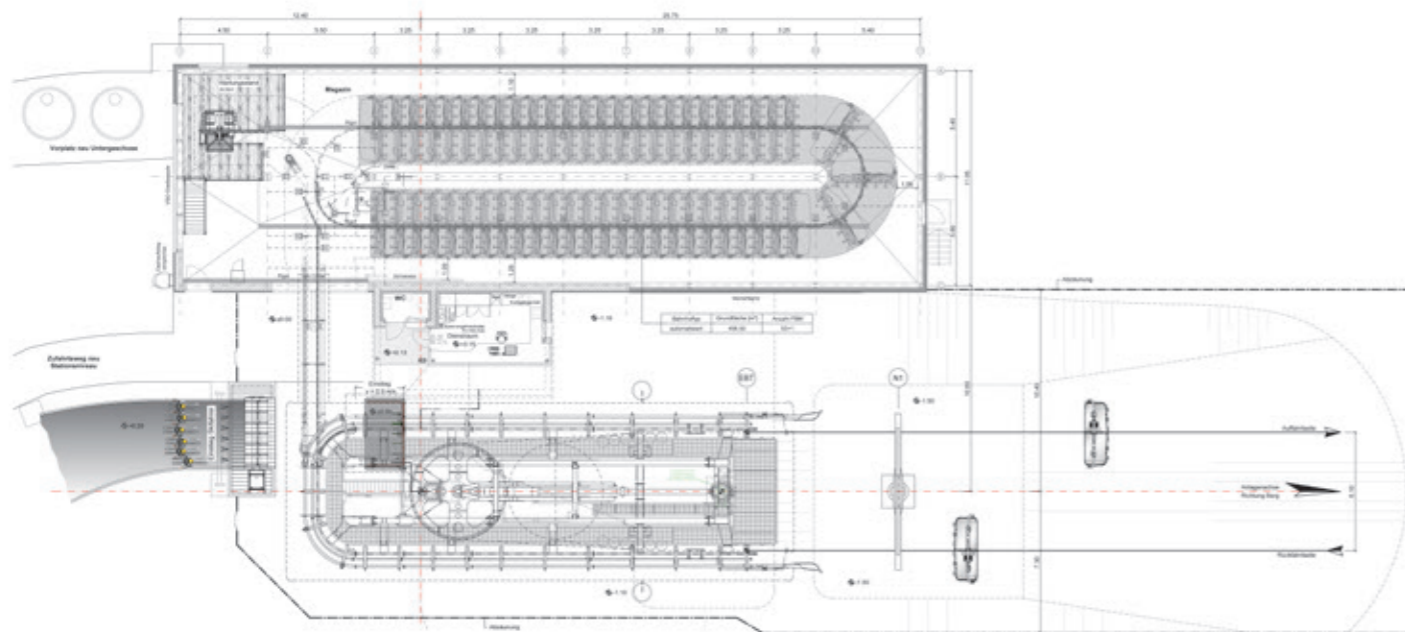
CD6C GAUXJOCH

Kitzbühel / AT

Inclined length	1289 m	Power	353 kW
Vertical rise	127 m	Total number of vehicles	53
Transport capacity	2400 p/h	Total number of towers	10

Intent on remaining at the forefront of modern ropeway systems and comfort, Bergbahn AG Kitzbühel once again extended its long-standing, successful partnership with LEITNER. The aging “Gauxjoch” surface lift was replaced by a modern 6-seater chairlift with all the features one could wish for. Every hour, premium individual chairs with intelligent heating and slightly tinted weather bubbles carry 2,400 visitors to this premium ski resort at an impressive speed of 6 m/s.

The efficient, resource-saving LEITNER Direct-Drive system is complemented by a LeitDrive frequency inverter which, perfectly attuned to the motor, guarantees a high overall efficiency of 96 percent across every load range. Then there is LEITNER’s Intelligent Heat Detector (IHD) system, which utilizes a heat sensor on one of the ropeway’s vehicles combined with the access barriers, to automatically regulate the seat heating and save energy. This sustainable ropeway also has photovoltaic panels on the station canopy.







CD6C VALENA

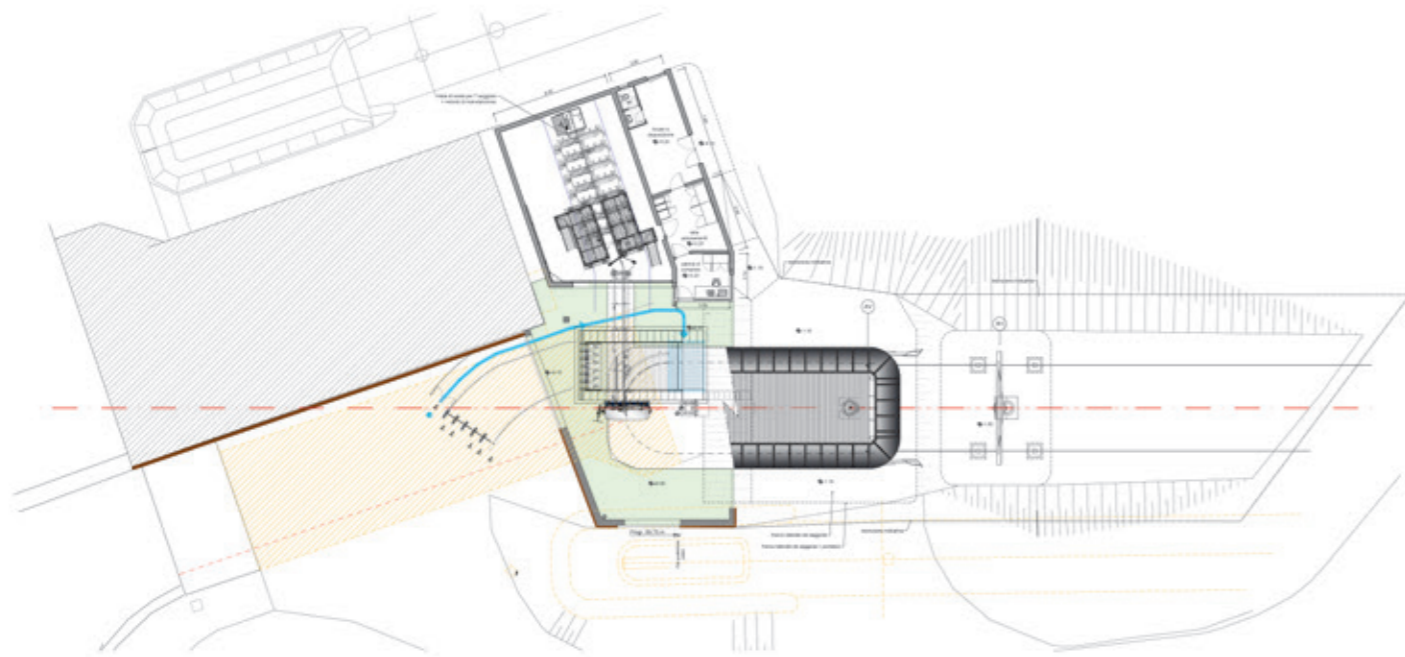
Ponte di Legno / IT

Inclined length	682 m	Power	370 kW
Vertical rise	123 m	Total number of vehicles	45
Transport capacity	3000 p/h	Total number of towers	6

A new 6-seater chairlift powered by the energy-efficient, resource-saving LEITNER Direct Drive was built in Val di Sole.

The popular Pontedilegno-Tonale ski resort offers its guests 100 kilometers of slopes, which can be accessed using 30 ropeways. While descending, winter sports enthusiasts can enjoy a view of the peaks of the Adamello Group.

Equipped with bubbles and Premium heated chairs, the CD6C "Valena" can carry 3000 people per hour and offers significantly more comfort than its 2002 predecessor. The new ropeway is designed for year-round operation and allows summer sports enthusiasts to carry their bikes a distance of 684 m in just three minutes.







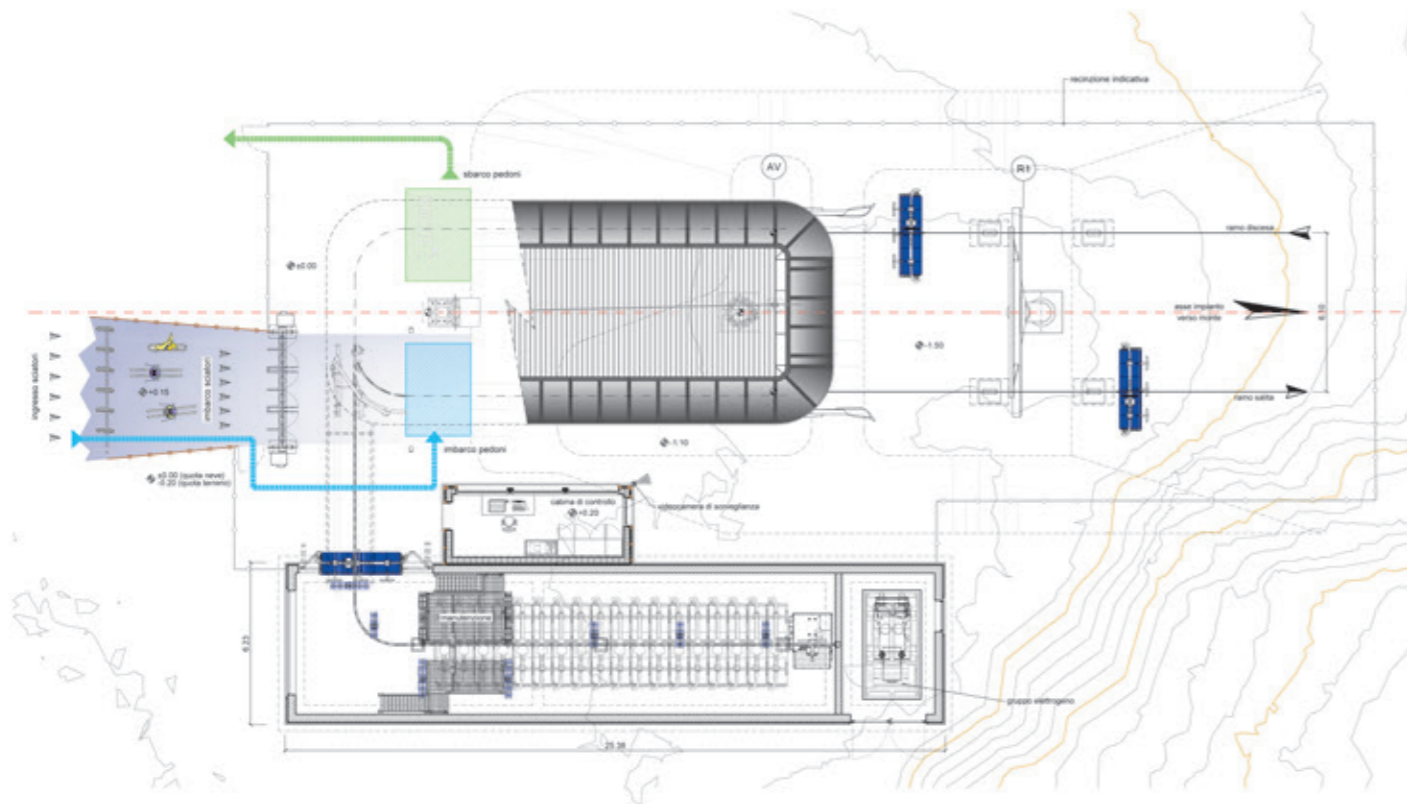
CD6 MALGA POLZON

Colere / IT

Inclined length	1519 m	Power	710 kW
Vertical rise	529 m	Total number of vehicles	72
Transport capacity	2400 p/h	Total number of towers	13

At the Colere Ski Area, in the province of Bergamo, LEITNER was commissioned to build a 10-passenger gondola lift as well as a modern, comfortable 6-seater chairlift. The new CD6 "Malga Polzon" starts right at the top station of the new 10-passenger gondola lift, which acts

as a feeder, and carries 2,400 passengers per hour at a speed of 5 m/s up to Cima Bianca. Vehicles are garaged at both stations in order to achieve an efficient, compact construction and reduce unnecessary ground sealing.





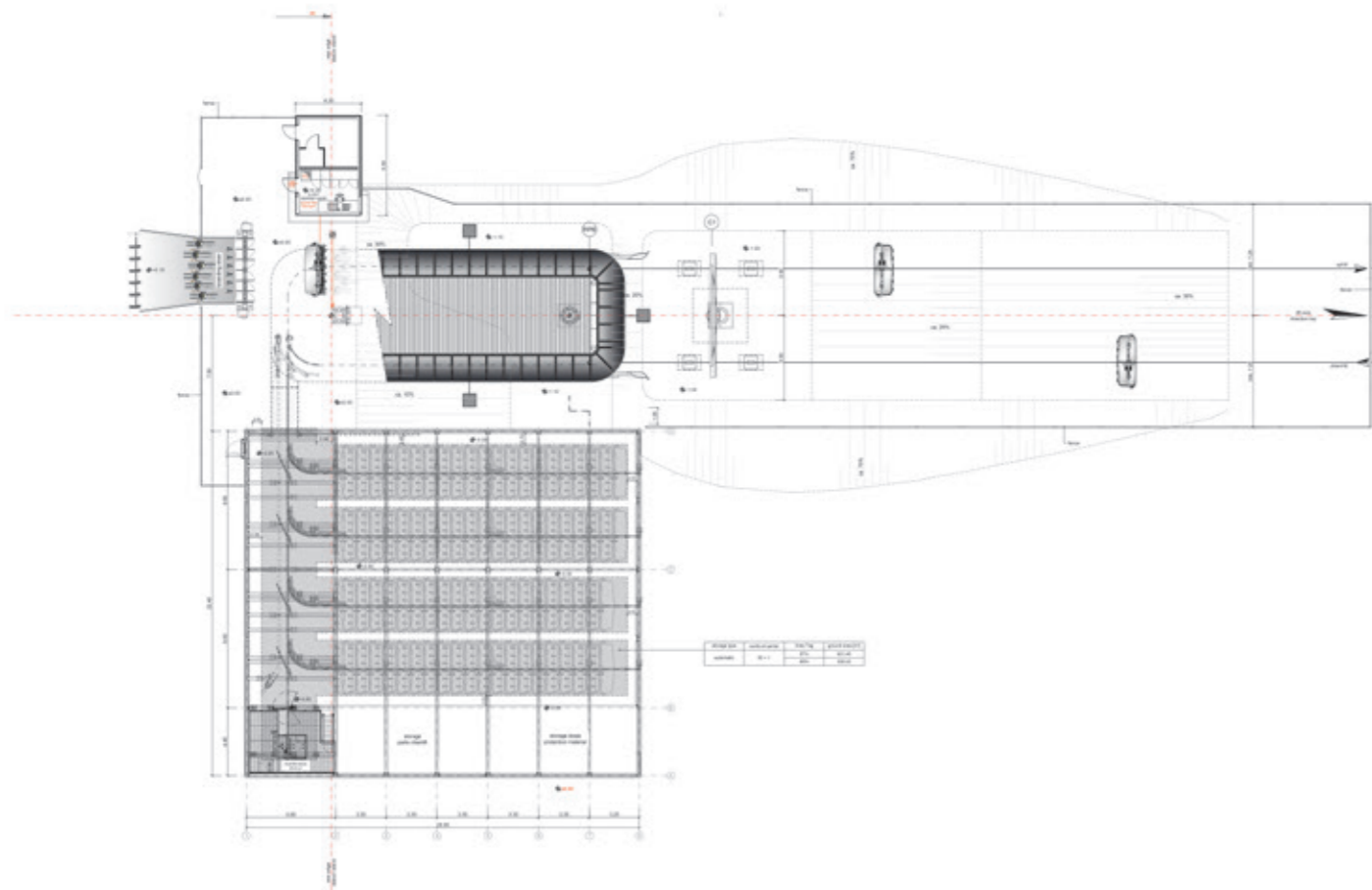
CD6C VIDSYNEXPRESSEN

Hafjell / NO

Inclined length	1896 m	Power	630 kW
Vertical rise	371 m	Total number of vehicles	82
Transport capacity	2600 p/h	Total number of towers	18

At the Norwegian alpine center of Hafjell in Lillehammer, operators worked with LEITNER once again to build the new "Vidsynexpressen" 6-seater chairlift. An identical ropeway was built there back in 2018. This new ropeway, which will operate in winter, is fitted with EVO Premium chairs with luxury upholstery, seat

heating, bubbles, and vertical oscillation damping, which are especially popular in the north of Europe on account of the strong winds. Fully developed, this ropeway will achieve a capacity of 2,600 passengers per hour and cover a distance of just under 1.9 kilometers.







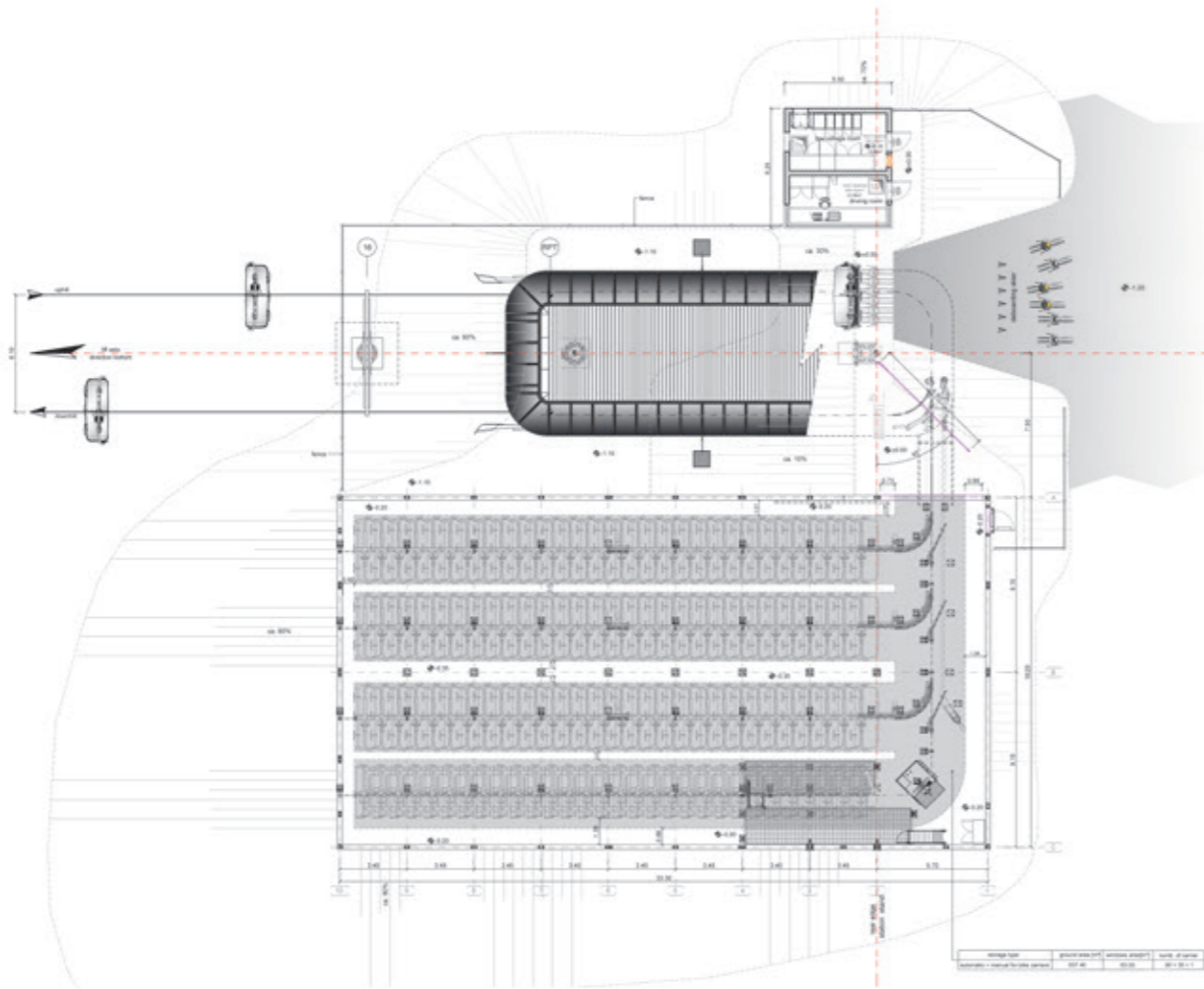
CD6C LODGE EXPRESS

Hemsedal / NO

Inclined length	1815 m	Power	794 kW
Vertical rise	501 m	Total number of vehicles	90
Transport capacity	3000 p/h	Total number of towers	16

At the Norwegian ski resort of Hemsedal, operator Skistar will be turning once again to LEITNER for the coming season. Alongside the Parkheis surface lift completed in 2023, the "Lodge Express" 6-seater chairlift now increases total capacity by a further 3,000

passengers per hour. Fitted with LEITNER DirectDrive, weather bubbles, and EVO Premium chairs with luxury upholstery, this ropeway brings the latest levels of transport comfort to this diverse resort with its 44 kilometers of slopes.





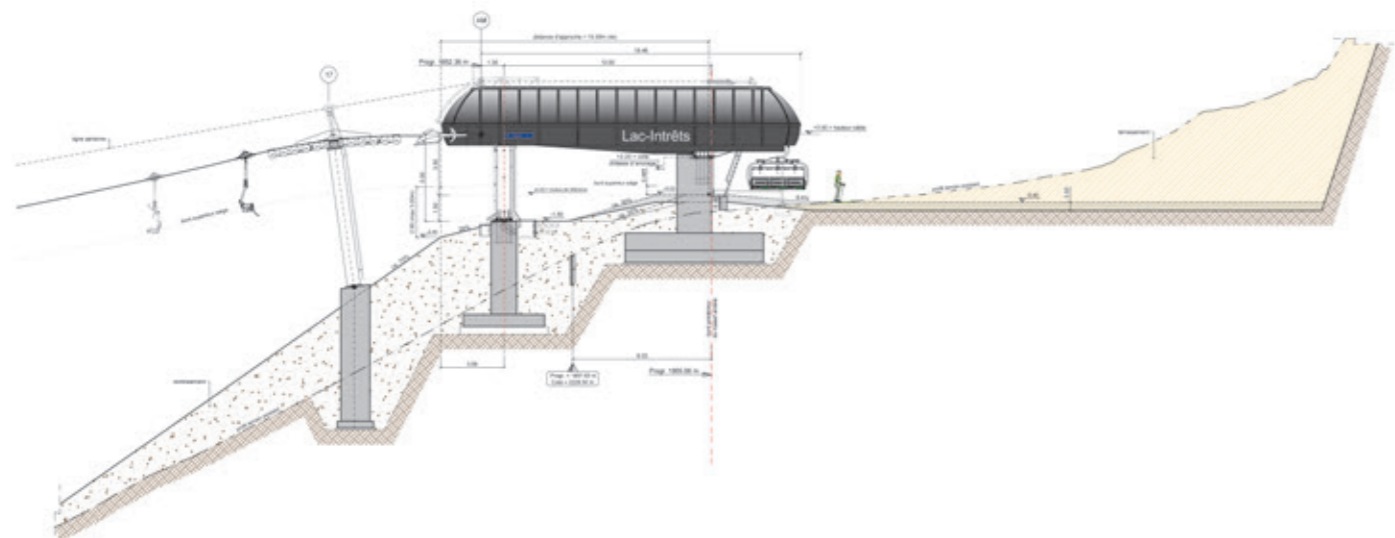
CD6 DU LAC - INTRETS

Avoriaz / FR

Inclined length	1883 m	Power	794 kW
Vertical rise	494 m	Total number of vehicles	93
Transport capacity	3000 p/h	Total number of towers	17

At the Les Portes du Soleil ski resort on the border between France and Switzerland, LEITNER built a 6-seater chairlift in 2019, and is now once again upgrading the quality of facilities in this megaski area. This region has been one of the world's biggest winter destinations for over 50 years, and unites 12 areas offering a total of 580 km of slopes. The new

"Du Lac – Intrets" 6-seater chairlift has a total capacity of 3,000 people per hour and is to replace an ageing system. The modern ropeway offers much greater capacity and improved comfort, as well as fewer towers and noticeably less noise due to the use of LEITNER DirectDrive.







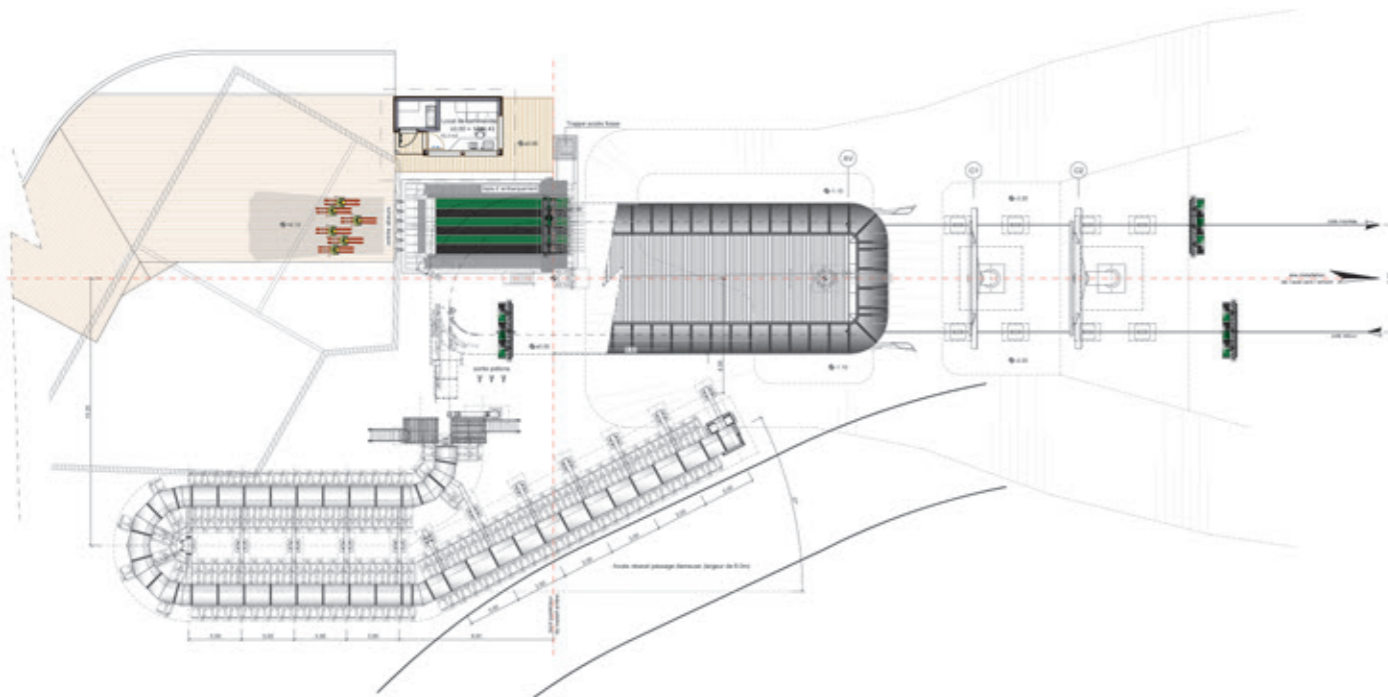
CD6 BÉRANGÈRE

Chamrousse / FR

Inclined length	1757 m	Power	794 kW
Vertical rise	377 m	Total number of vehicles	105
Transport capacity	3600 p/h	Total number of towers	16

The new "Bérangère" 6-seater chairlift provides 50% more capacity, greater comfort, and greater operating efficiency at one of the main transport axes in the Chamrousse resort. This was where contests were held during the 1968 Winter Olympics at Grenoble, and it boasts over 90 kilometers of slopes, which include impressive viewpoints looking out over the Val-d'Isère and the cliffs of the Chartreuse Moun-

tains opposite. The LEITNER ropeway, which was built to replace the "Bérangère" 4-seater chairlift, is powered by a resource-saving LEITNER DirectDrive and has an additional parking line for garaging at the bottom station. Up to 3,000 passengers per hour can be carried in a total of 88 chairs over a distance of more than 1,700 meters.







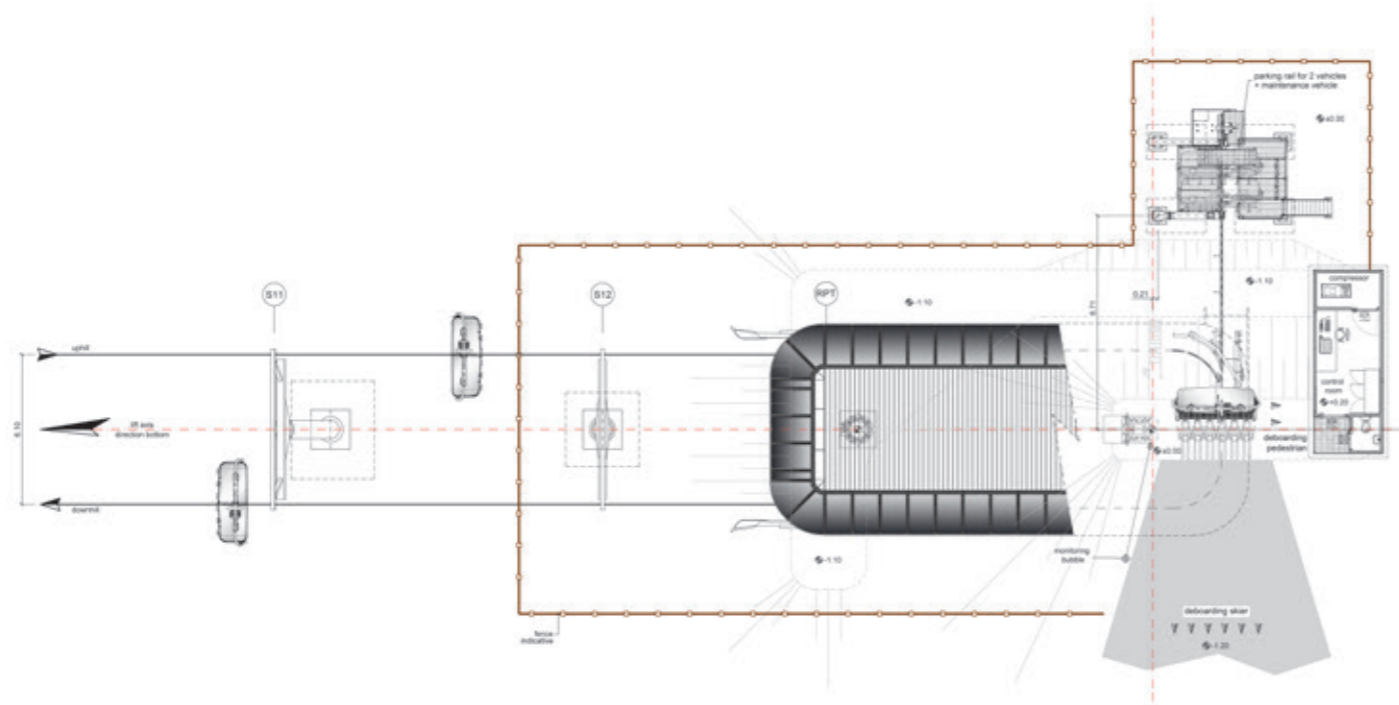
CD6C ZVOH

Krvavec / SI

Inclined length	1317 m	Power	570 kW
Vertical rise	369 m	Total number of vehicles	53
Transport capacity	2385 p/h	Total number of towers	12

The ropeway infrastructure at the Slovenian ski resort of Krvavec is undergoing modernization. LEITNER built a new 6-seater chairlift there with a maximum capacity of 2,400 passengers per hour. The winter sports area of Gorenjska is Ljubljana's local mountain playground and has a total of 30 kilometers of slopes between the altitudes of 1,450 and 1,970 meters, ser-

vised by 13 ascent facilities. The new CD6C "Zvoh" ropeway features EVO Premium chairs, seat heating, and luxury upholstery, and replaces a 2-seater chairlift, providing the ideal comfortable means of transport for younger winter sports enthusiasts: the ski resort includes a ski school and a 'magic carpet'.







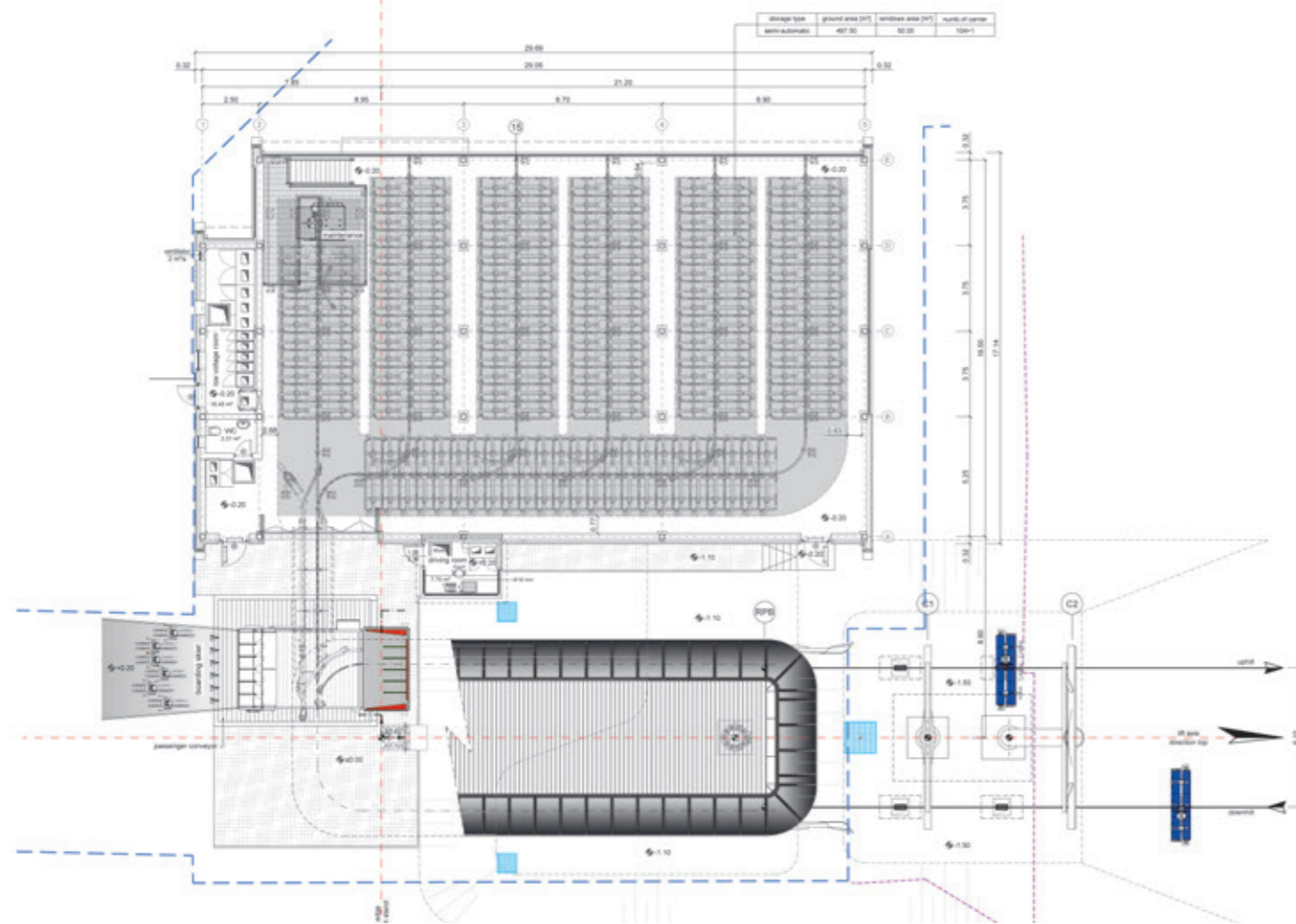
CD6 MALINA

Pamporovo / BG

Inclined length	2124 m	Power	794 kW
Vertical rise	474 m	Total number of vehicles	104
Transport capacity	3000 p/h	Total number of towers	20

LEITNER has completed its ropeway premiere in the well-known ski region of Pamporovo by building the comfortable "Malina" 6-seater chairlift. Guests at this Bulgarian resort can now enjoy agreeable transport on premium EVO chairs and luxury upholstery. The winter

sports area in the Rhodope Mountains offers just under 30 km of slopes catering for all age groups and abilities. The modern system replaces a 3-seater chairlift built in 1986 and offers an impressive capacity of 3,000 passengers per hour over a distance of 2,140 m.







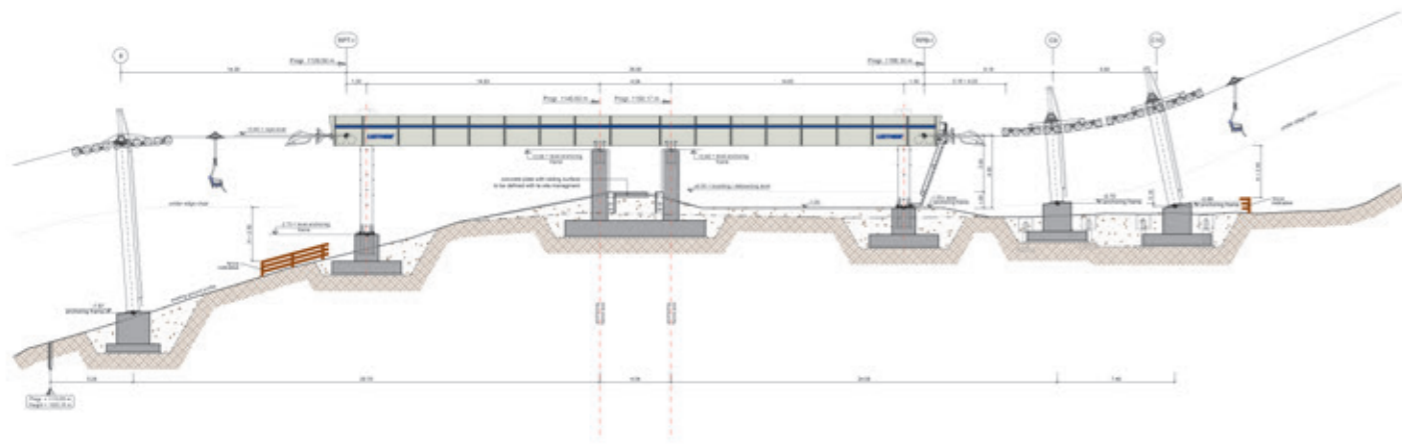
CD6 ŠIMNOVEC

Kamnik / SI

Inclined length	1341 m	Power	440 kW
Vertical rise	258 m	Total number of vehicles	41
Transport capacity	1460 p/h	Total number of towers	12

At Velika Planina, a popular family ski resort near Ljubljana in Slovenia, the new “Šimnovec” 6-seater chairlift replaced an aging double-seater in December 2023. This ropeway has a capacity of 1,500 passengers per hour and runs a distance of 1.3 kilometers via a middle station, all the way to the summit slope of Gradisce mountain. It has a total of

41 chairs. Connecting to the existing gondola lift which leads from the valley, and equipped with an energy-efficient LEITNER DirectDrive, the new ropeway acts as a modern feeder to the plateau, where winter sports enthusiasts can enjoy three kilometers of slopes, popular cross country ski tracks, luge tracks, and hiking trails.







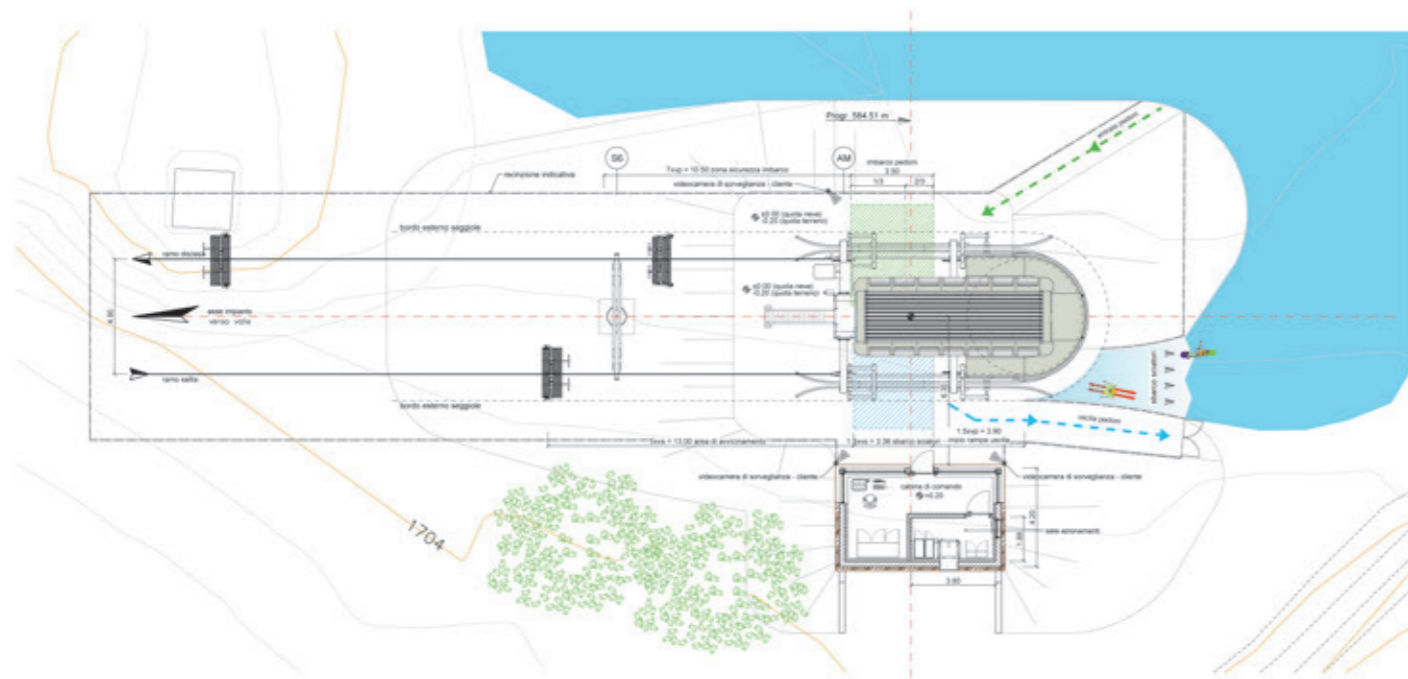
CF4 PASSO COE

Folgaria / IT

Inclined length	546 m	Power	132 kW
Vertical rise	95 m	Total number of vehicles	60
Transport capacity	2000 p/h	Total number of towers	6

The family-friendly Folgaria/Fiorentini ski area heads the list of the best resorts on Alpe Cimbra, offering its visitors 70 kilometers of wonderful slopes as well as breathtaking panoramic views.
A new 4-seater chairlift built by LEITNER

replaced a surface lift in time for the 2023/24 winter season, offering winter sports enthusiasts significantly greater comfort. Equipped with LEITNER KidStop, the CF4 "Passo Coe" makes it easier to transport beginners and children.





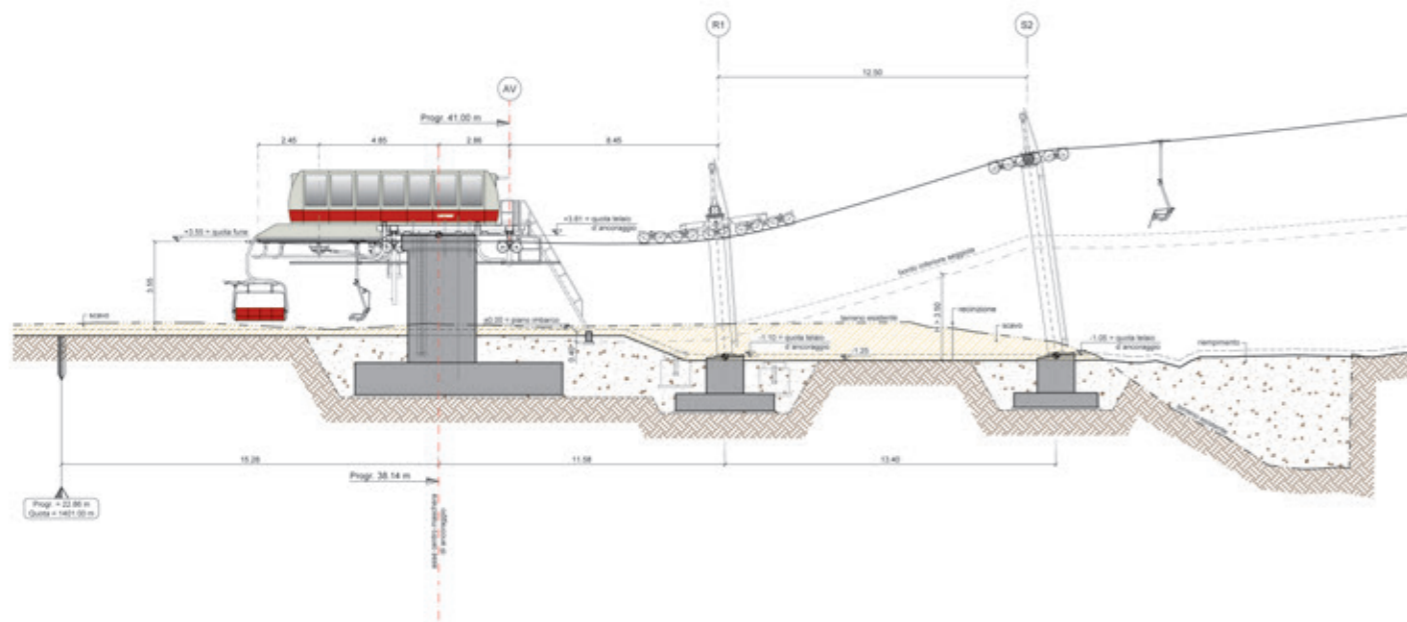
CF4 DELLE COSTE

Val di Zoldo / IT

Inclined length	873 m	Power	200 kW
Vertical rise	210 m	Total number of vehicles	96
Transport capacity	2000 p/h	Total number of towers	9

The Civetta ski resort is situated in the far south-east of the unique Dolomiti Superski region. The ski resorts belonging to the larger settlements of Alleghe, Selva di Cadore, Zoldo, and Palafavera are linked contiguously around Monte Civetta. This unlocks over 80 kilometers of slopes to winter sports enthusiasts, who can enjoy wide-ranging views over broad snow fields and the towering summits of the Dolomites.

Visitors can also look forward to a modern, comfortable LEITNER 4-seater chairlift which replaces an aging 2-seater. It runs along the same route, but with a reduced number of towers. The new ropeway links the Val di Zoldo with the Palafavera area, from which there is a connection to Alleghe and Selva di Cadore. This upgrade has boosted hourly capacity from 1,200 to 2,000 passengers.







CF4 RUŠKA

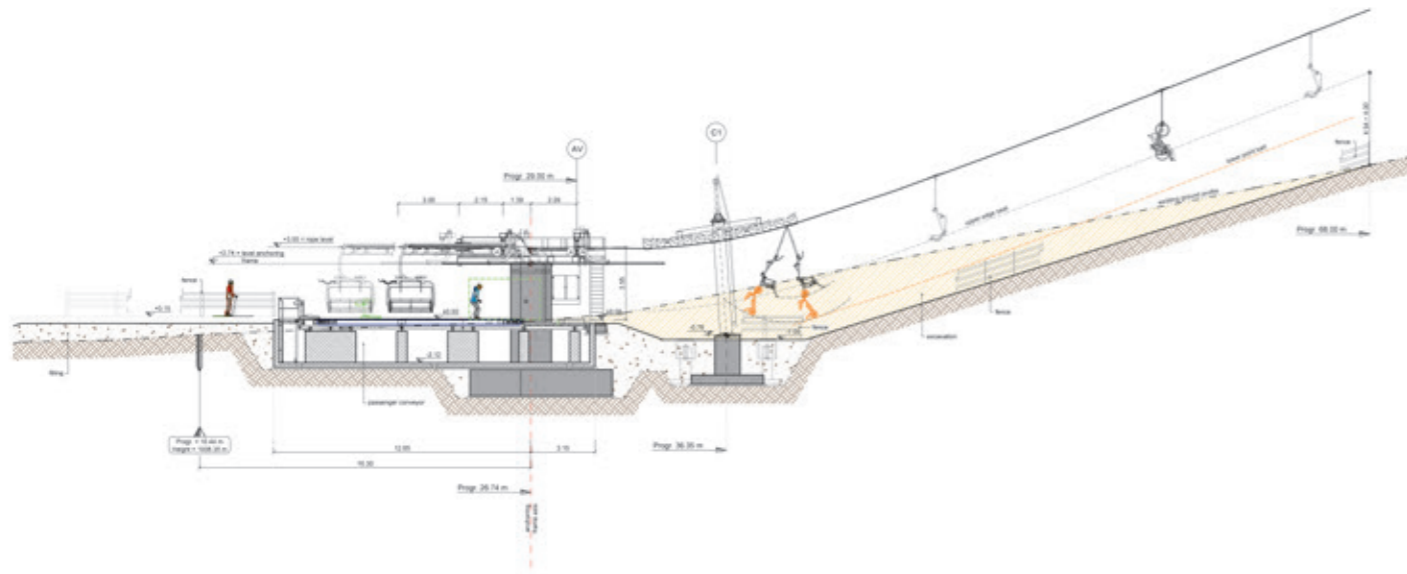
Maribor / SI

Inclined length	1268 m
Vertical rise	240 m
Transport capacity	2020 p/h

Power	200 kW
Total number of vehicles	140
Total number of towers	11

A new 4-seater chairlift called CF4 "Ruška" has been built at Mariborsko Pohorje, Slovenia's biggest ski resort. The Maribor ski area encompasses 35 kilometers of slopes and 14 ropeways and is known as a venue for ladies' world cup competitions. Despite the relatively low altitudes, ski conditions are ideal because

the slopes are looked after so well. This winter sports resort also features one of Europe's longest night ski slopes as an added attraction. Almost 1.3 kilometers long, the new LEITNER ropeway has 102 chairs and can carry up to 2,000 passengers per hour.





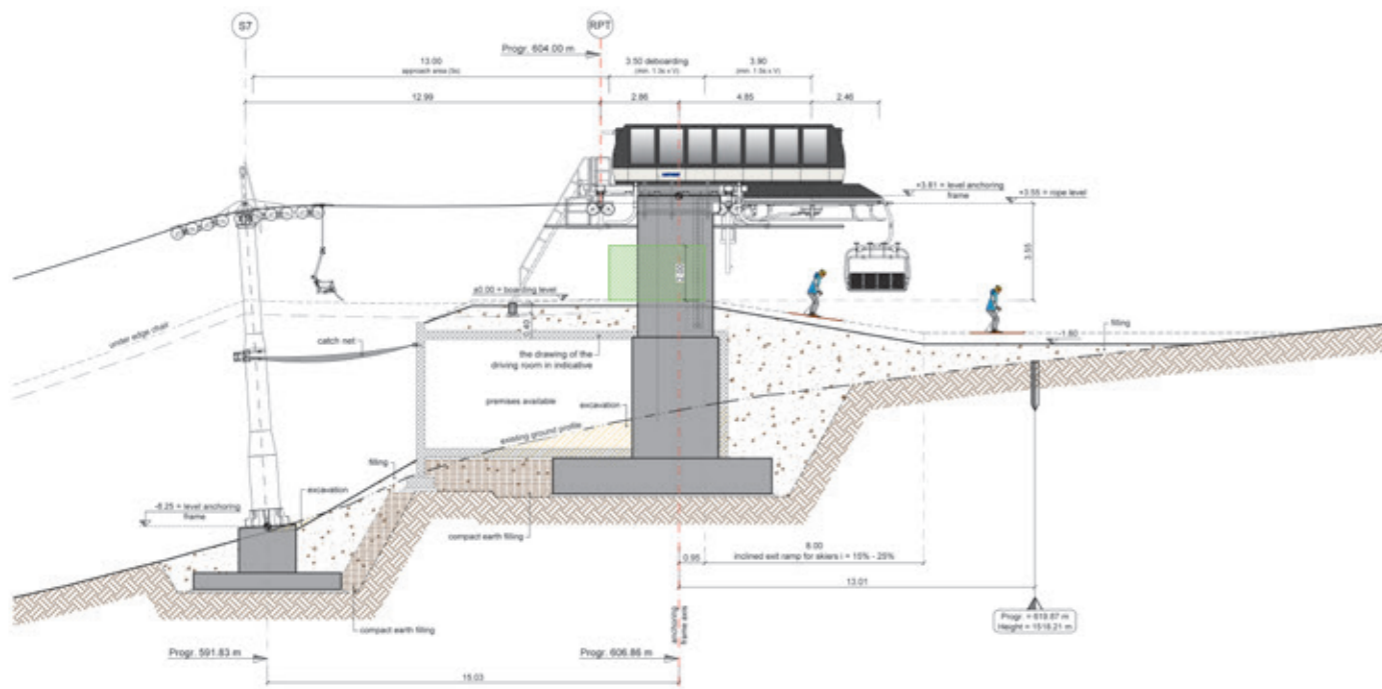
CF4 KOPNIK

Kope / SI

Inclined length	627 m	Power	200 kW
Vertical rise	210 m	Total number of vehicles	69
Transport capacity	2000 p/h	Total number of towers	7

LEITNER has built no fewer than three new ropeways at the Kope ski resort in Koroška. Thanks to comprehensive investments, this has become one of the region's favorite ski spots, offering a wide variety of slopes for everybody from children to experienced skiers.

The "Kopnik" 4-seater chairlift is now offering an additional quality bonus. The new chairlift, which can carry 2,000 passengers per hour, has 56 chairs and features the latest in passenger comfort.





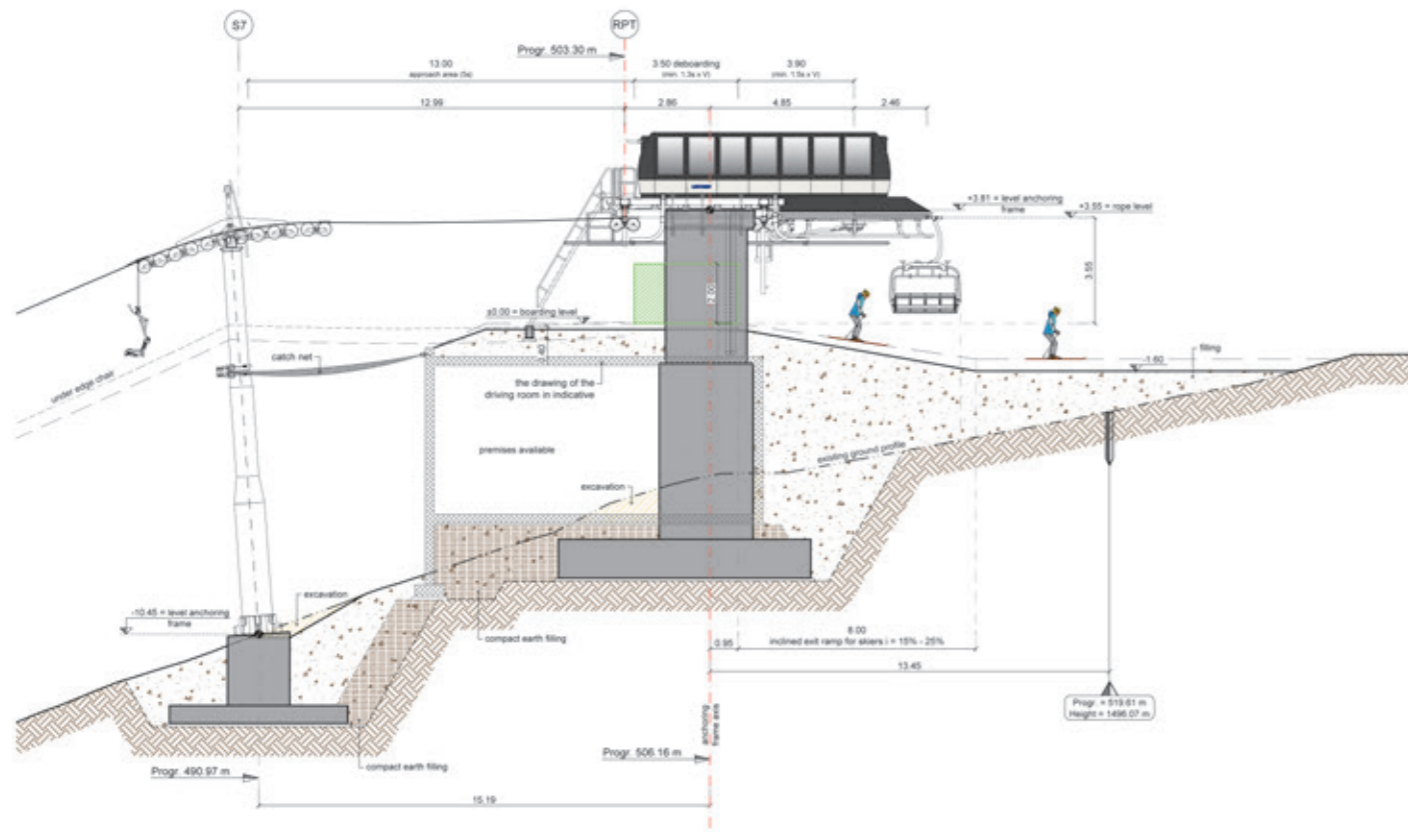
CF4 PAHERNIK

Kope / SI

Inclined length	509 m	Power	200 kW
Vertical rise	160 m	Total number of vehicles	56
Transport capacity	2000 p/h	Total number of towers	7

The Slovenian ski resort of Kope in the Koroška region has experienced a major boom, thanks to comprehensive investment. As part of modernization work, LEITNER provided three new ropeways, furnishing this favorite ski center with innovative quality

transport for its eight kilometers of slopes of all difficulty grades. The new "Pahernik" 4-seater chairlift replaces an old surface lift and carries 2000 passengers per hour a distance of 671 m just below the summit of Velika Kopa.

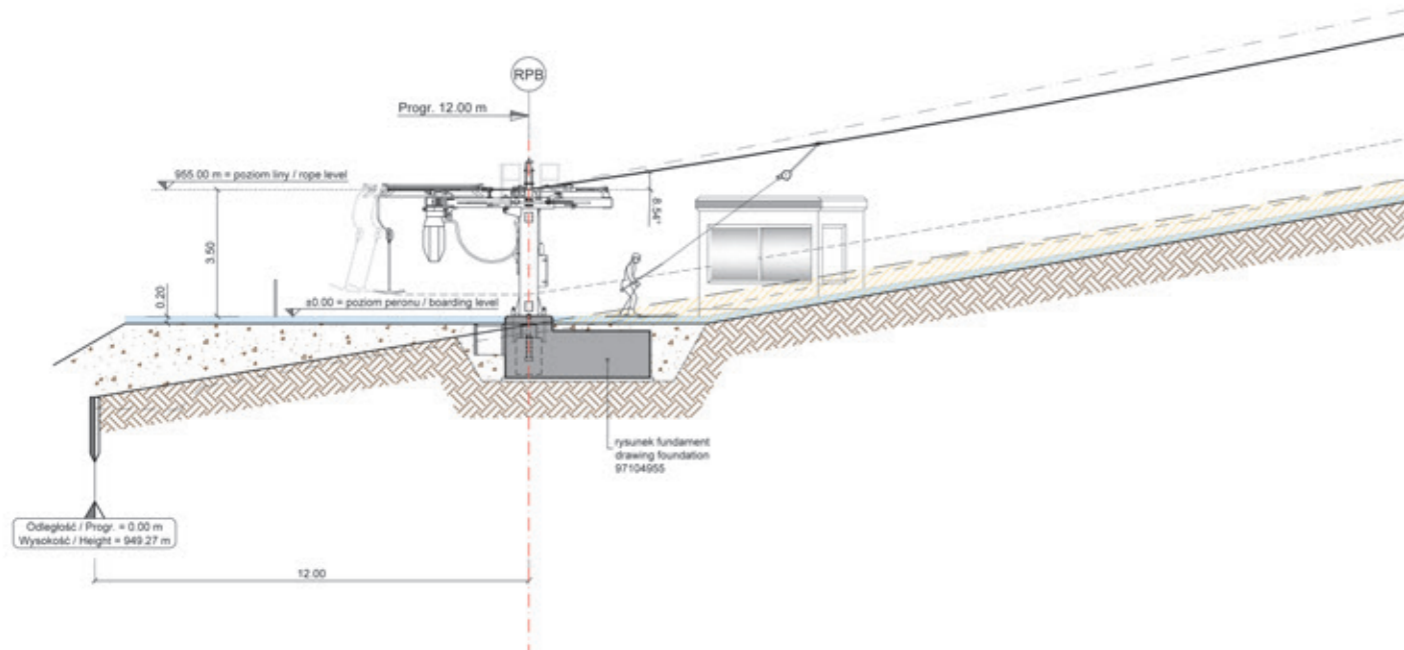




SL2 JAWORZYNA

Szczyrk / PL

Inclined length	441 m	Power	30 kW
Vertical rise	72 m	Total number of vehicles	41
Transport capacity	821 p/h	Total number of towers	5



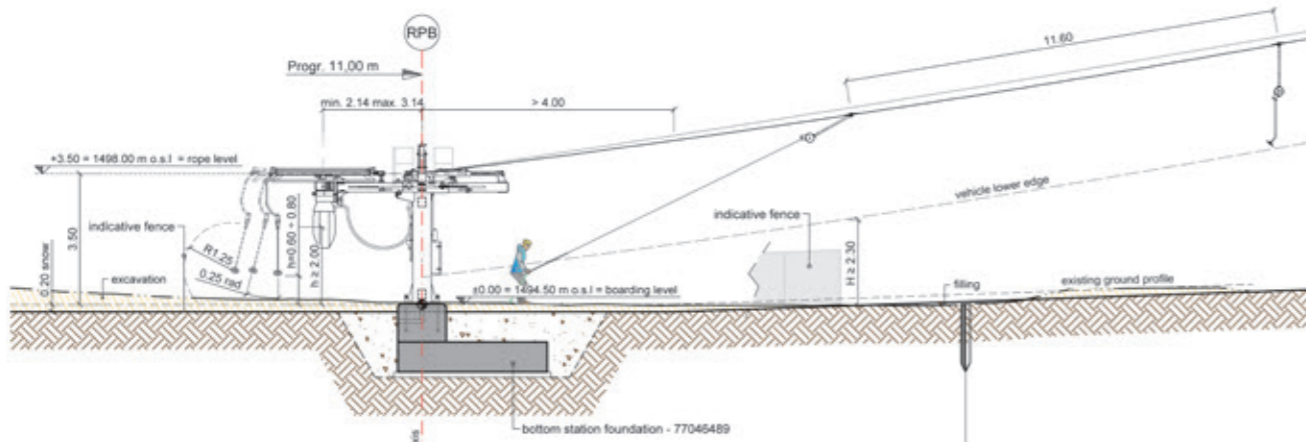


SL1 VELIKA KOPA

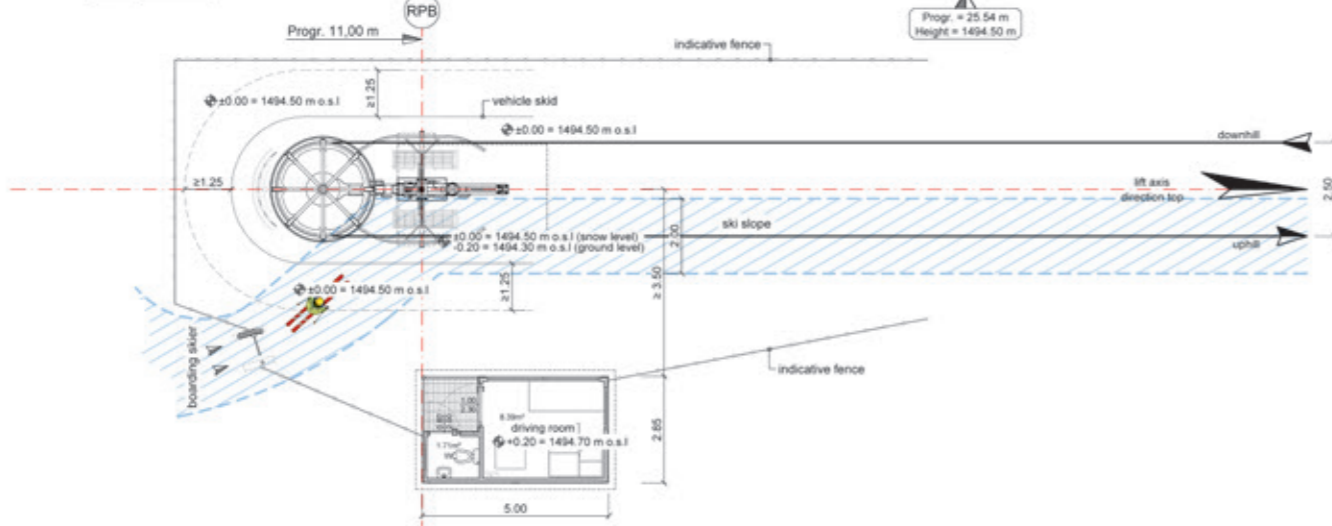
Kope / SI

Inclined length	320 m	Power	30 kW
Vertical rise	45 m	Total number of vehicles	56
Transport capacity	890 p/h	Total number of towers	5

Section "A-A"



Top view



Successfully modernized





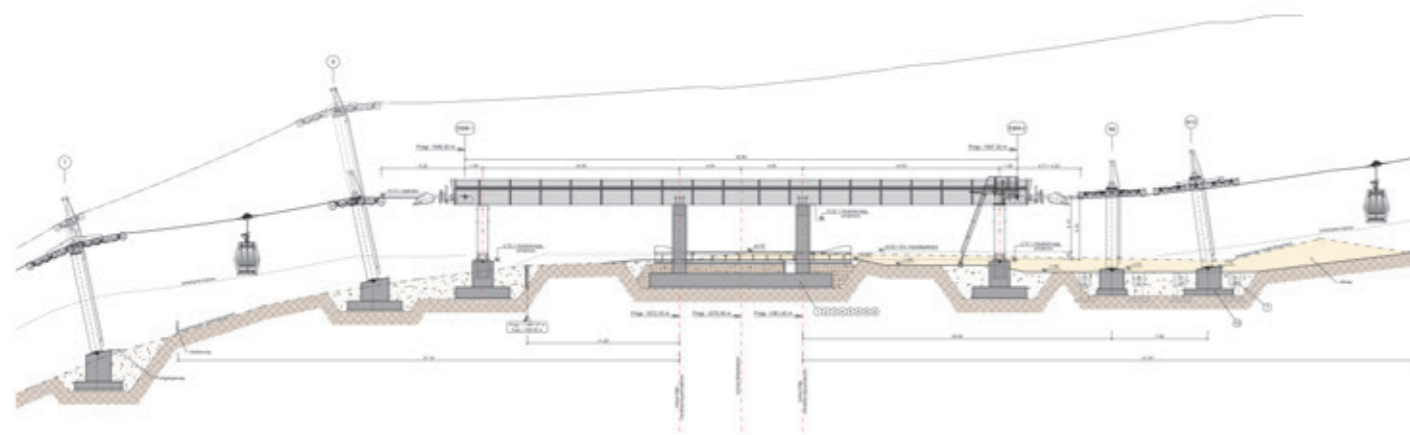
GD8 MARIBOR

Maribor / SI

Inclined length	2502 m	Power	773 kW
Vertical rise	714 m	Total number of vehicles	82
Transport capacity	2400 p/h	Total number of towers	19

The "Pohorska Vzpenjača" 8-passenger gondola lift at the ski resort of Mariborsko Pohorje very near to the Slovenian city of Maribor has been running since 2009. As part of a comprehensive renovation project, a new middle station was integrated into the ropeway profile last year to enable people to get in and out of the ropeway halfway up. This allows skiers to make the best use of the ropeway, especially in spring, when skiing from the summit and in

the resort's higher reaches. The new middle station was built in two phases between spring and fall of the previous year. Handing over this turnkey project was a major undertaking and demanded careful management, since the construction and assembly work involved collaboration with local businesses. The completion of this new station has added a lot of value by adapting the facility to conditions at Slovenia's biggest ski resort.





GD8 DOSS DEI LARESI - CERMIS

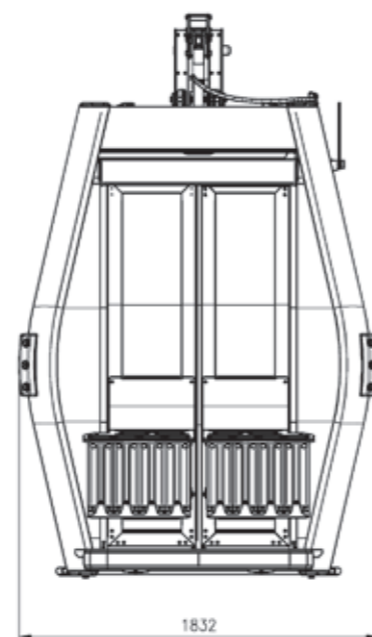
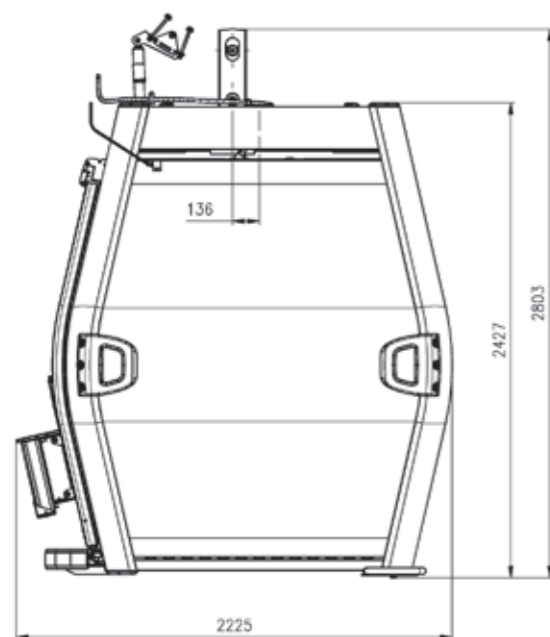
Cavalese / IT

Inclined length	2446 m
Vertical rise	737 m
Transport capacity	2800 p/h

Power	1240 kW
Total number of vehicles	89
Total number of towers	19

The “Doss dei Laresi - Cermis” 8-passenger gondola lift has been running since 2005 at the Alpe Cermis – Cavalese ski resort in Val di Fiemme. LEITNER was appointed to give the ropeway a facelift and comprehensively upgrade its image. At the heart of this refurbishment was a refit with new Diamond EVO Premium cabins, which—based on Pininfarina’s successful Symphony cabin design—represent yet another visual quality leap on the ropeway market. Benefits include all-round

glazing for a 360-degree panorama, as well as high-comfort chairs and multiple options for equipping the cabins multifunctionally in line with operators’ requirements. The cabin refurbishment included upgrading all the closing rails, cabin guides, and the garage in line with the new requirements. The two-month project included renewing the station floor and installing the latest technology for controlling and operating the vehicle station.





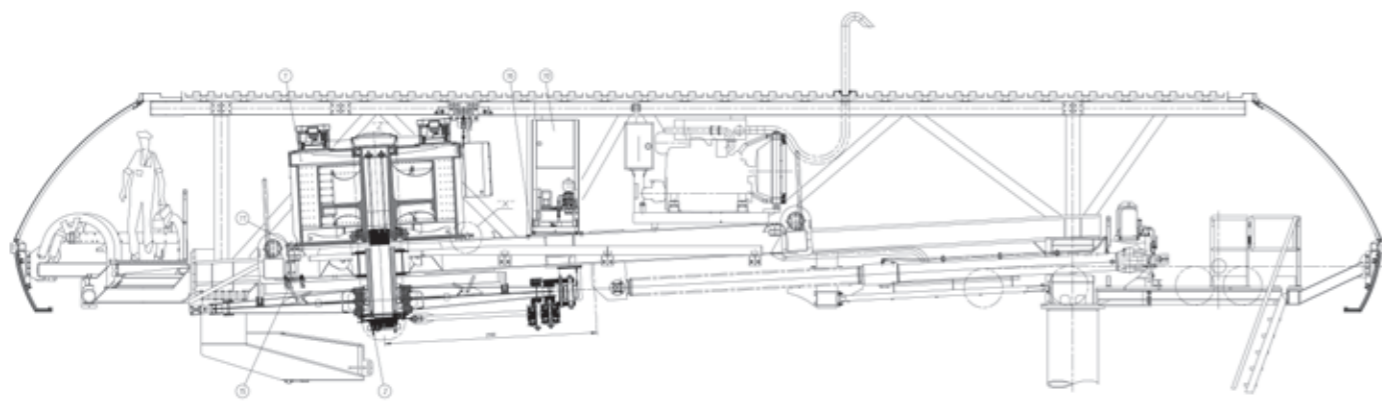
CD6 SOCHERS - CIAMPINOI

Wolkenstein – Selva Val Gardena / IT

Inclined length	991 m	Power	562 kW
Vertical rise	296 m	Total number of vehicles	40
Transport capacity	2000 p/h	Total number of towers	13

The CD6 “Sochers-Ciampinoi” has been running up and down the Saslong World Cup slope at the Gröden ski resort since 2002. Set against the impressive backdrop of the Dolomites and the vast landscape of ski slopes that is Sellaronda, the ropeway has been comprehensively modernized over recent years, with a focus on efficiency and improved comfort. Refurbishments included equipping it with comfortable new EVO Premium chairs

featuring individual footrests. They boast luxury upholstery and a clean, elegant, sophisticated design. The ropeway has also been brought up to the latest standard technically with a new LeitControl system and an integrated LEITNER DirectDrive, providing gearless, low-noise, maintenance-friendly power. The ropeway is over 20 years old, and these refurbishments will have a major impact on protecting the environment and resources.





CD4 ARLARA

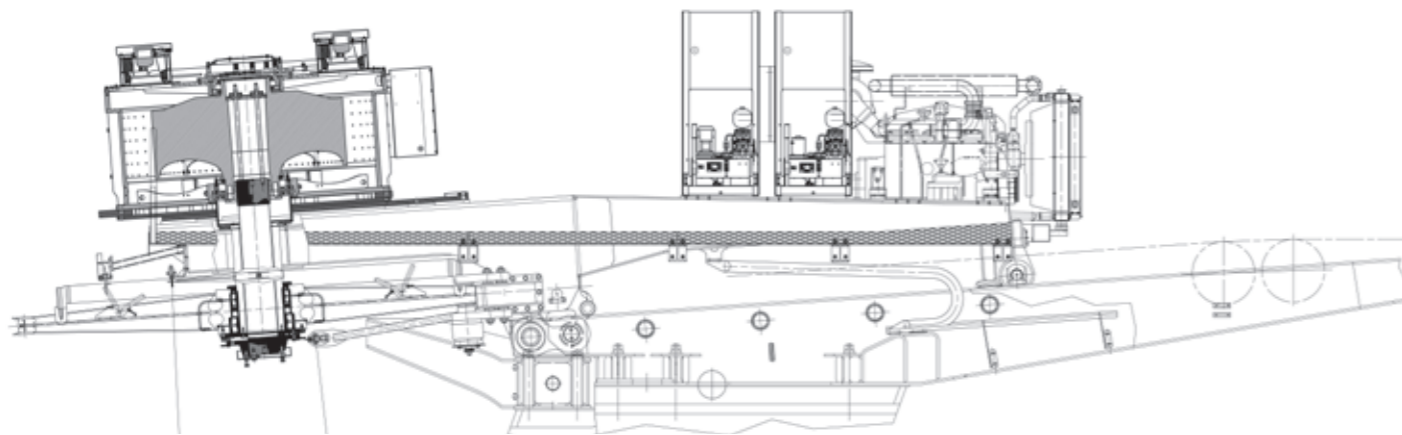
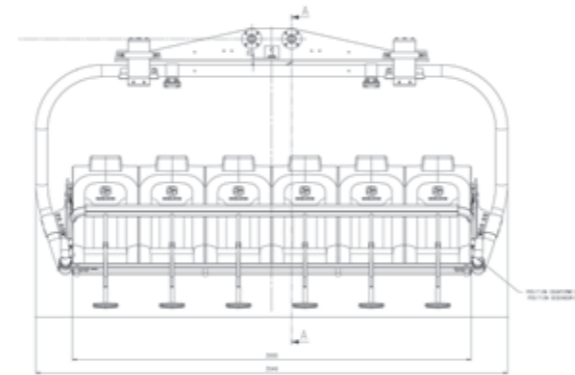
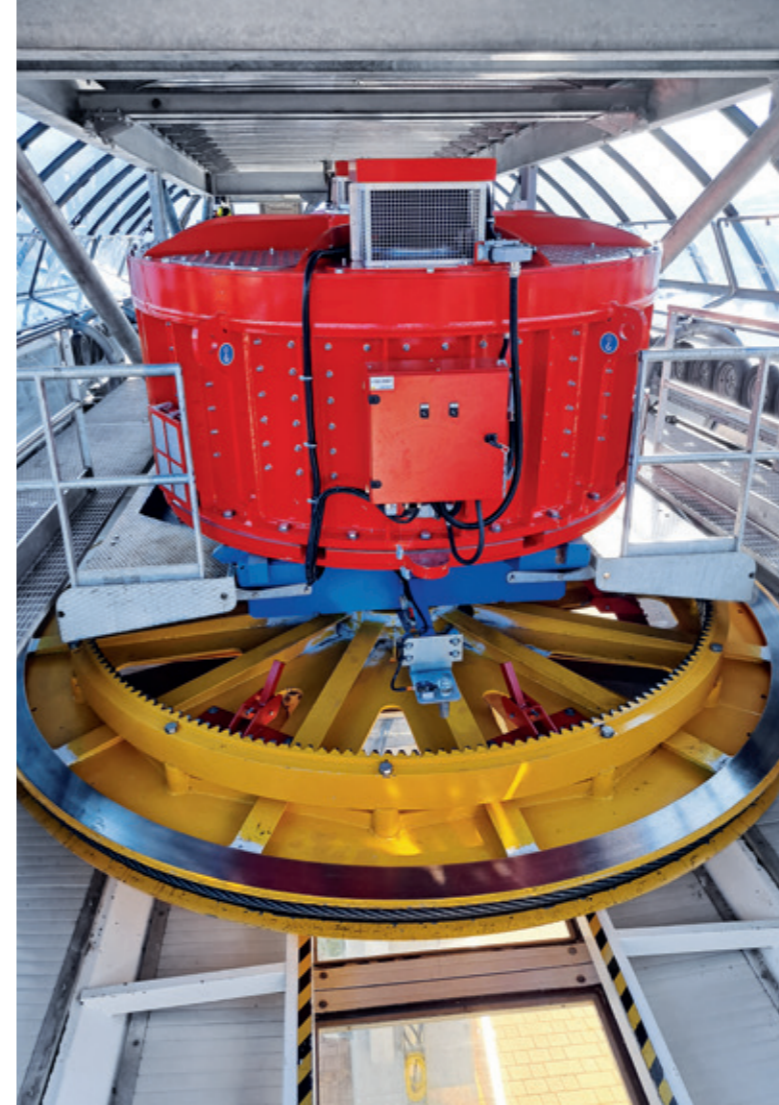
Corvara / IT

Inclined length	1268 m
Vertical rise	340 m
Transport capacity	2000 p/h

Power	480 kW
Total number of vehicles	75
Total number of towers	15

The resort of Alta Badia has a long tradition of skiing, and last year saw the first refurbishment of the "Arlara" 4-seater chairlift in 20 years. As well as installing comfortable, modern chairs, the drive and control technology was comprehensively refurbished. The ropeway now has LeitControl, which, with its innovative visualization systems, greatly simplifies control and monitoring processes. Users can zoom into different system levels and focus in on different elements of the motor and maintenance

functions. The ropeway was also fitted with the latest generation of LEITNER DirectDrive, providing gearless power while minimizing noise and simplifying maintenance. As a result, the ropeway is now quieter and less subject to wear, and no longer requires oil. One of the reasons for switching to the new drive system was to improve the situation for guests at the restaurant at the top station, who can now enjoy their break on the terrace with less disturbance.




Successes 2023



Successes 2023


LEITNER®

**TD28 MATTERHORN
GLACIER RIDE II**
Zermatt / CH




↗	1675 m
↕	362 m
👤👤👤	1300 p/h
⚙️	485 kW
🏠	10
⌄	0

IF33 MILAS
Milas / TR




↗	606 m
↕	155 m
👤👤👤	260 p/h
⚙️	200 kW
🏠	1
⌄	0

GD10 PLOSE 1
Brixen -
Bressanone / IT




↗	1502 m
↕	556 m
👤👤👤	2400 p/h
⚙️	793 kW
🏠	43
⌄	10

GD10 DUB KUK
Kotor / MNE




↗	3917 m
↕	1316 m
👤👤👤	1200 p/h
⚙️	880 kW
🏠	48
⌄	19

GD10 MEXICABLE LV-A
Ecatepec / MX




↗	3022 m
↕	4 m
👤👤👤	3000 p/h
⚙️	1143 kW
🏠	103
⌄	20

GD10 MEXICABLE LV-B
Ecatepec / MX



↗	2878 m
↕	74 m
👤👤👤	3000 p/h
⚙️	1016 kW
🏠	100
⌄	18

GD10 PLOSE 2
Brixen -
Bressanone / IT



↗	1141 m
↕	424 m
👤👤👤	2400 p/h
⚙️	793 kW
🏠	35
⌄	11

GD10 BABY EXPRESS
Andalo / IT




↗	415 m
↕	113 m
👤👤👤	2400 p/h
⚙️	250 kW
🏠	21
⌄	5

GD10 DOSS DEL SABION
Pinzolo / IT



↗	1633 m
↕	592 m
👤👤👤	2800 p/h
⚙️	854 kW
🏠	53
⌄	11

GD10 MEXICABLE LV-C
Ecatepec / MX




↗	2236 m
↕	45 m
👤👤👤	3000 p/h
⚙️	1016 kW
🏠	82
⌄	15

GD8 SAPANCA
Sapanca / TR




↗	1501 m
↕	319 m
👤👤👤	1513 p/h
⚙️	355 kW
🏠	36
⌄	9

CD8C MASTO EXPRESS
Ruka-Kuusamo / FI




↗	640 m
↕	122 m
👤👤👤	4000 p/h
⚙️	407 kW
🏠	37
⌄	6

GD10 CARBONERA
Colere / IT




↗	1573 m
↕	501 m
👤👤👤	1700 p/h
⚙️	630 kW
🏠	30
⌄	8

GD10 GALTBERGBAHN
Fulpmes / AT




↗	1436 m
↕	455 m
👤👤👤	2000 p/h
⚙️	529 kW
🏠	33
⌄	9

GD10 WILDE KRIMML
Zell am Ziller / AT




↗	1870 m
↕	436 m
👤👤👤	2400 p/h
⚙️	794 kW
🏠	50
⌄	9

CD6 MALGA POLZON
Colere / IT




↗	1519 m
↕	529 m
👤👤👤	2400 p/h
⚙️	710 kW
🏠	72
⌄	13

CD6C VALENA
Ponte di Legno / IT




↗	682 m
↕	123 m
👤👤👤	3000 p/h
⚙️	370 kW
🏠	45
⌄	6

CD6C TRATTENBACH
Kitzbühel / AT




↗	802 m
↕	308 m
👤👤👤	2400 p/h
⚙️	441 kW
🏠	41
⌄	8

**GD10
OCHSENKOPF NORD**
Bischofsgrün / DE




↗	2178 m
↕	359 m
👤👤👤	2000 p/h
⚙️	794 kW
🏠	50
⌄	17

GD10 AIRELLES EXPRESS
Font-Romeu / FR




↗	1747 m
↕	187 m
👤👤👤	2400 p/h
⚙️	529 kW
🏠	48
⌄	11

GD10 ACHILLEAS
Kalavryta / GR




↗	729 m
↕	161 m
👤👤👤	2200 p/h
⚙️	370 kW
🏠	25
⌄	5

CD6C GAUXJOCH
Kitzbühel / AT




↗	1289 m
↕	127 m
👤👤👤	2400 p/h
⚙️	353 kW
🏠	53
⌄	10

CD6 MALINA
Pamporovo / BG









↗	2124 m
↕	474 m
👤👤👤	3000 p/h
⚙️	794 kW
🏠	104
⌄	20

CD6 DU LAC - INTRETS
Avoriaz / FR









↗	1883 m
↕	494 m
👤👤👤	3000 p/h
⚙️	794 kW
🏠	93
⌄	17

CD6 BÉRANGÈRE
Chamrousse / FR

	1757 m
	377 m
	3600 p/h
	794 kW
	105
	16

CD6C VIDSYNEXPRESSEN
Hafjell / NO

	1896 m
	371 m
	2600 p/h
	630 kW
	82
	18




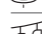


CD6C LODGE EXPRESS
Hemsedal / NO

	1815 m
	501 m
	3000 p/h
	794 kW
	90
	16




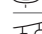


SL2 JAWORZYNA
Szczyrk / PL

	441 m
	72 m
	821 p/h
	30 kW
	41
	5

SL2 SADELLIFTEN
Åre / SE

	889 m
	165 m
	1345 p/h
	90 kW
	99
	9



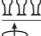



SL1 HEINRICH HARRER
Moos - Moso / IT

	451 m
	58 m
	898 p/h
	45 kW
	72
	5



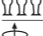



CD6 VÄSTEXPRESSEN
Järvsö / SE

	929 m
	179 m
	2600 p/h
	315 kW
	50
	10



CD6 ŠIMNOVEC
Kamnik / SI

	1341 m
	258 m
	1460 p/h
	440 kW
	41
	12







CD6C ZVOH
Krvavec / SI

	1317 m
	369 m
	2385 p/h
	570 kW
	53
	12







SL1 CENDEVAVES
Santa Cristina Val Gardena / IT

	334 m
	56 m
	895 p/h
	45 kW
	57
	4

SL1 MAISILIFT II
Kaprun / AT

	532 m
	83 m
	663 p/h
	45 kW
	80
	5


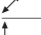


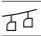

SL1 LAILIAS
Ski Center Lailias - Serres / GR

	737 m
	203 m
	892 p/h
	90 kW
	106
	8

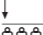
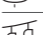


CF4 DELLE COSTE
Val di Zoldo / IT

	873 m
	210 m
	2000 p/h
	200 kW
	96
	9

CF4 BUSA FONDA - MONTE LONGARA
Comune di Gallio località Melette / IT

	694 m
	186 m
	1200 p/h
	132 kW
	47
	7


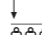

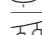


CF4 PASSO COE
Folgaria / IT

	546 m
	95 m
	2000 p/h
	132 kW
	60
	6


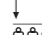

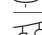


SL1 KOLASIN LIFT 2
Kolasin / MNE

	380 m
	92 m
	716 p/h
	45 kW
	64
	4



SL1 PARKHEIS
Hemsedal / NO

	457 m
	114 m
	900 p/h
	45 kW
	80
	5

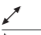

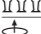
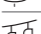


SL1 POLARIS 2
Idre / SE

	339 m
	42 m
	800 p/h
	20 kW
	67
	5

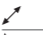
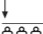
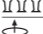
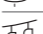


CF4 KOPNIK
Kope / SI

	627 m
	210 m
	2000 p/h
	200 kW
	69
	7

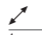
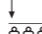

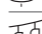


CF4 RUSKA
Maribor / SI



	1268 m
	240 m
	2020 p/h
	200 kW
	140
	11




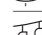


CF4 PAHERNIK
Kope / SI

	509 m
	160 m
	2000 p/h
	200 kW
	56
	7

SL1 VELIKA KOPA
Kope / SI

	320 m
	45 m
	890 p/h
	30 kW
	56
	5

	Winter Sports
	Urban
	Tourism

	Inclined length
	Vertical rise
	Transport capacity
	Power
	Total number of vehicles
	Total number of towers

LEITNER



Vipiteno, Italy



Vipiteno, Italy



Telfs, Austria



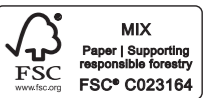
Montmélian, France



Torino, Italy



Starà L'ubovňa, Slovakia



MIX
Paper | Supporting
responsible forestry
FSC® C023164

LEITNER®

